

Product datasheet for **TA392416M**

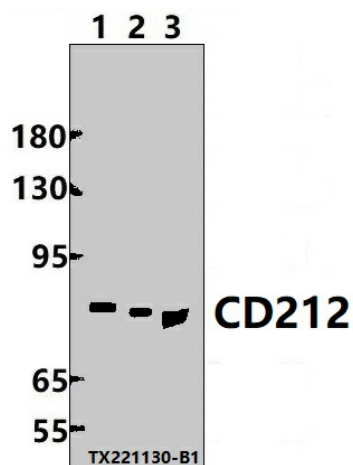
IL12RB1 Rabbit Polyclonal Antibody

Product data:

Product Type:	Primary Antibodies
Applications:	WB
Recommended Dilution:	WB: 1:1000~1:2000
Reactivity:	Human
Host:	Rabbit
Isotype:	IgG
Clonality:	Polyclonal
Immunogen:	Recombinant protein of human CD212.
Specificity:	CD212 polyclonal antibody detects endogenous levels of CD212 protein.
Formulation:	Rabbit IgG, 1mg/ml in PBS with 0.02% sodium azide, 50% glycerol, pH7.2.
Concentration:	1mg/ml
Conjugation:	Unconjugated
Storage:	Store at 4°C short term. Aliquot and store at -20°C long term. Avoid freeze-thaw cycles.
Stability:	1 year
Predicted Protein Size:	~ 80 kDa
Gene Name:	interleukin 12 receptor subunit beta 1
Database Link:	Entrez Gene 3594 Human P42701
Background:	Functions as an interleukin receptor which binds interleukin-12 with low affinity and is involved in IL12 transduction. Associated with IL12RB2 it forms a functional, high affinity receptor for IL12. Associates also with IL23R to form the interleukin-23 receptor which functions in IL23 signal transduction probably through activation of the Jak-Stat signaling cascade.
Synonyms:	CD_antigen: CD212; IL-12 receptor beta component; IL-12 receptor subunit beta-1; IL-12R-beta-1; IL-12RB1; IL-12R subunit beta-1; IL12R; IL12RB; IL12RB1; Interleukin-12 receptor subunit beta-1
Note:	For research use only, not for use in diagnostic procedure.


[View online »](#)

Product images:



Western blot (WB) analysis of CD212 polyclonal antibody at 1:1000 dilution Lane1:MCF-7 whole cell lysate(30ug) Lane2:EC9706 whole cell lysate(30ug) Lane3:K562 whole cell lysate(30ug)