

Product datasheet for **TA392416**

IL12RB1 Rabbit Polyclonal Antibody

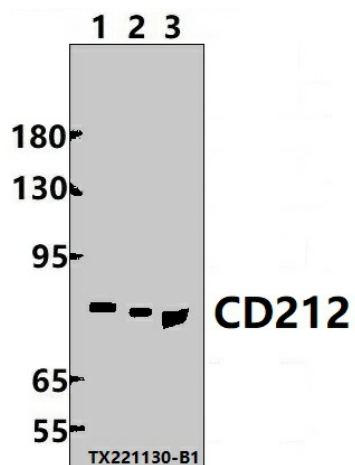
Product data:

| | |
|-------------------------|---|
| Product Type: | Primary Antibodies |
| Applications: | WB |
| Recommended Dilution: | WB: 1:1000~1:2000 |
| Reactivity: | Human |
| Host: | Rabbit |
| Isotype: | IgG |
| Clonality: | Polyclonal |
| Immunogen: | Recombinant protein of human CD212. |
| Specificity: | CD212 polyclonal antibody detects endogenous levels of CD212 protein. |
| Formulation: | Rabbit IgG, 1mg/ml in PBS with 0.02% sodium azide, 50% glycerol, pH7.2. |
| Concentration: | 1mg/ml |
| Conjugation: | Unconjugated |
| Storage: | Store at 4°C short term. Aliquot and store at -20°C long term. Avoid freeze-thaw cycles. |
| Stability: | 1 year |
| Predicted Protein Size: | ~ 80 kDa |
| Gene Name: | interleukin 12 receptor subunit beta 1 |
| Database Link: | Entrez Gene 3594 Human P42701 |
| Background: | Functions as an interleukin receptor which binds interleukin-12 with low affinity and is involved in IL12 transduction. Associated with IL12RB2 it forms a functional, high affinity receptor for IL12. Associates also with IL23R to form the interleukin-23 receptor which functions in IL23 signal transduction probably through activation of the Jak-Stat signaling cascade. |
| Synonyms: | CD_antigen: CD212; IL-12 receptor beta component; IL-12 receptor subunit beta-1; IL-12R-beta-1; IL-12RB1; IL-12R subunit beta-1; IL12R; IL12RB; IL12RB1; Interleukin-12 receptor subunit beta-1 |
| Note: | For research use only, not for use in diagnostic procedure. |



[View online »](#)

Product images:



Western blot (WB) analysis of CD212 polyclonal antibody at 1:1000 dilution Lane1:MCF-7 whole cell lysate(30ug) Lane2:EC9706 whole cell lysate(30ug) Lane3:K562 whole cell lysate(30ug)