

## Product datasheet for **TA392415M**

### GCSF Receptor (CSF3R) Rabbit Polyclonal Antibody

#### Product data:

Product Type:	Primary Antibodies
Applications:	WB
Recommended Dilution:	WB: 1:1000~1:2000
Reactivity:	Human, Mouse
Host:	Rabbit
Isotype:	IgG
Clonality:	Polyclonal
Immunogen:	Recombinant protein of human CD114/CSF3R.
Specificity:	CD114/CSF3R polyclonal antibody detects endogenous levels of CD114/CSF3R protein.
Formulation:	Rabbit IgG, 1mg/ml in PBS with 0.02% sodium azide, 50% glycerol, pH7.2.
Concentration:	1mg/ml
Conjugation:	Unconjugated
Storage:	Store at 4°C short term. Aliquot and store at -20°C long term. Avoid freeze-thaw cycles.
Stability:	1 year
Predicted Protein Size:	~ 105 kDa
Gene Name:	colony stimulating factor 3 receptor
Database Link:	<a href="#">Entrez Gene 1441 Human Q99062</a>



[View online »](#)

**Background:**

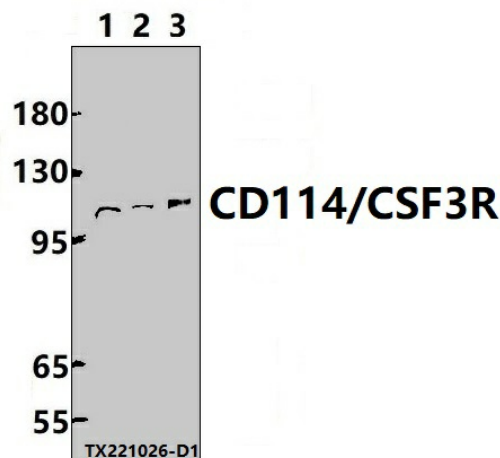
Granulocyte colony-stimulating factor receptor (G-CSF-R) is a transmembrane protein comprised of an immunoglobulin-like (Ig-like) domain, a cytokine receptor-homologous (CRH) domain, and three fibronectin type III (FN III) domains. G-CSF-R is expressed on all granulocytic lineages, including progenitor cells, and has been detected on monocytes, T and B lymphocytes, as well as non-hematopoietic tissues including cardiomyocytes and neural stem cells. The primary ligand for G-CSF-R is the cytokine granulocyte colony-stimulating factor (G-CSF). G-CSF-R has no intrinsic tyrosine kinase activity; ligand binding induces conformational changes in the receptor, leading to activation of the Jak/Stat, PI3K/Akt, and MAPK pathways. G-CSF induces differentiation and proliferation of myeloid progenitor cells into neutrophils. Multiple diseases have been associated with mutations of the G-CSF-R gene, CSF3R, including severe congenital neutropenia (SCN), chronic neutrophilic leukemia (CNL), and atypical chronic myeloid leukemia (aCML).

**Synonyms:**

CD\_antigen: CD114; CSF3R; G-CSF-R; G-CSF receptor; GCSFR; Granulocyte colony-stimulating factor receptor

**Note:**

For research use only, not for use in diagnostic procedure.

**Product images:**


Western blot (WB) analysis of CD114/CSF3R polyclonal antibody at 1:1000 dilution  
Lane1:A549 whole cell lysate(30ug) Lane2:SP2/0 whole cell lysate(30ug) Lane3:The Brain tissue lysate of Mouse(30ug)