

Product datasheet for **TA392414M**

ATF3 Rabbit Polyclonal Antibody

Product data:

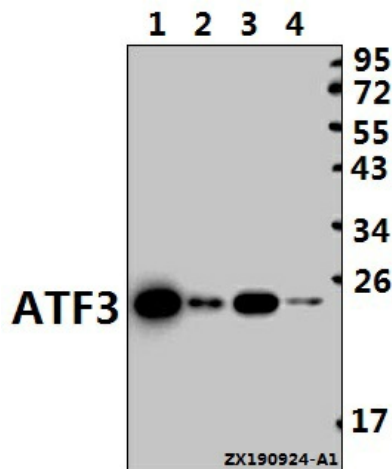
Product Type:	Primary Antibodies
Applications:	IHC, WB
Recommended Dilution:	WB: 1:1000~1:2000 IHC: 1:50~1:200
Reactivity:	Human, Rat
Host:	Rabbit
Isotype:	IgG
Clonality:	Polyclonal
Immunogen:	Synthetic peptide, corresponding to Human ATF3.
Specificity:	ATF-3 (N159) polyclonal antibody detects endogenous levels of ATF-3 protein.
Formulation:	Rabbit IgG, 1mg/ml in PBS with 0.02% sodium azide, 50% glycerol, pH7.2
Concentration:	1mg/ml
Conjugation:	Unconjugated
Storage:	Store at 4°C short term. Aliquot and store at -20°C long term. Avoid freeze-thaw cycles.
Stability:	1 year
Predicted Protein Size:	~ 24 kDa
Gene Name:	activating transcription factor 3
Database Link:	Entrez Gene 467 Human P18847
Background:	Activating transcription factor 3 is a member of the mammalian activation transcription factor/cAMP responsive element-binding (CREB) protein family of transcription factors. It encodes a protein with a calculated molecular mass of 22 kD. ATF3 represses rather than activates transcription from promoters with ATF binding elements. An alternatively spliced form of ATF3 (ATF3 delta Zip) encodes a truncated form ATF3 protein lacking the leucine zipper protein-dimerization motif and does not bind to DNA. In contrast to ATF3, ATF3 delta Zip stimulates transcription presumably by sequestering inhibitory co-factors away from the promoter. It is possible that alternative splicing of the ATF3 gene may be physiologically important in the regulation of target genes. Three transcript variants encoding two different isoforms have been found for this gene.


[View online »](#)

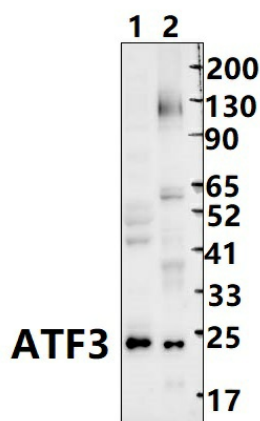
Synonyms: Activating transcription factor 3; ATF 3; ATF3; cAMP-dependent transcription factor ATF-3; Cyclic AMP-dependent transcription factor ATF-3

Note: For research use only, not for use in diagnostic procedure.

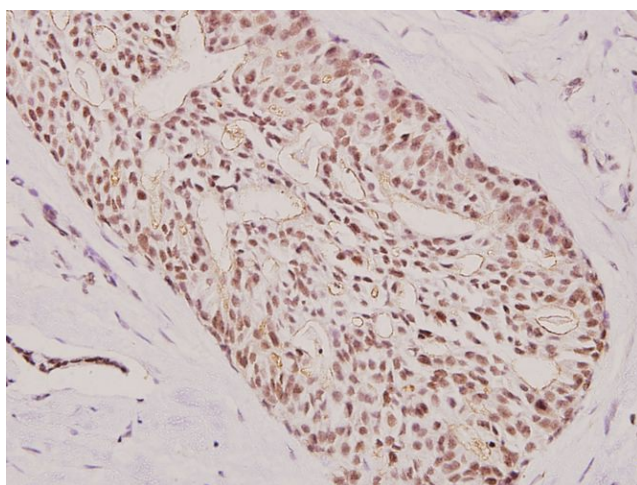
Product images:



Western blot (WB) analysis of ATF3 (N159) pAb at 1:500 dilution Lane1:L02 whole cell lysate(40ug)
Lane2:SGC7901 whole cell lysate(40ug)
Lane3:A549 whole cell lysate(40ug)
Lane4:HEK293T whole cell lysate(40ug)



Western blot (WB) analysis of ATF3 (N159) at 1:1000 dilution Lane1:The heart tissue lysate of Rat(30ug) Lane2:HepG2 whole cell lysate(30ug)



Immunohistochemistry (IHC) analyzes of ATF3 (N159) pAb in paraffin-embedded human breast carcinoma tissue at 1:100.