

## Product datasheet for **TA392413M**

### **BMP2K Rabbit Polyclonal Antibody**

#### **Product data:**

Product Type:	Primary Antibodies
Applications:	WB
Recommended Dilution:	WB: 1:1000~1:2000
Reactivity:	Human
Host:	Rabbit
Isotype:	IgG
Clonality:	Polyclonal
Immunogen:	Synthetic peptide, corresponding to Human BMP2K.
Specificity:	BMP2K polyclonal antibody detects endogenous levels of BMP2K protein.
Formulation:	Rabbit IgG, 1mg/ml in PBS with 0.02% sodium azide, 50% glycerol, pH7.2.
Concentration:	1mg/ml
Conjugation:	Unconjugated
Storage:	Store at 4°C short term. Aliquot and store at -20°C long term. Avoid freeze-thaw cycles.
Stability:	1 year
Predicted Protein Size:	~ 130 kDa
Gene Name:	BMP2 inducible kinase
Database Link:	<a href="#">Entrez Gene 55589 Human Q9NSY1</a>

[View online »](#)

**Background:**

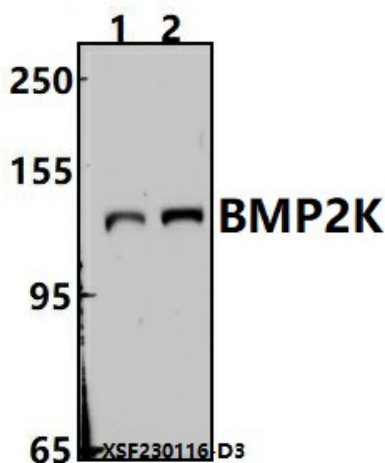
The phosphorylation and dephosphorylation of proteins on serine and threonine residues is an essential means of regulating a broad range of cellular functions in eukaryotes, including cell division, homeostasis and apoptosis. A group of proteins that are intimately involved in this process are the serine/threonine (Ser/Thr) protein kinases. BMP2K (BMP2 inducible kinase), also known as BIKE, is a 1,161 amino acid nuclear protein that contains one protein kinase domain and belongs to the Ser/Thr protein kinase family. Thought to be involved in osteoblast differentiation, BMP2K catalyzes the ATP-dependent phosphorylation of bone morphogenic proteins (BMPs); proteins that are essential for proper cartilage and bone formation. Via its catalytic activity, BMP2K may play a role in signaling pathways that mediate bone growth and cellular differentiation. Three isoforms of BMP2K exist due to alternative splicing events.

**Synonyms:**

BIKE; BIKe; BMP-2-inducible protein kinase; BMP2K; HRIHFB2017

**Note:**

For research use only, not for use in diagnostic procedure.

**Product images:**


Western blot (WB) analysis of BMP2K polyclonal antibody at 1:1000 dilution Lane1:A549 whole cell lysate(30ug) Lane2:MCF-7 whole cell lysate(30ug)