

Product datasheet for **TA392412**

ICAM5 Rabbit Polyclonal Antibody

Product data:

Product Type:	Primary Antibodies
Applications:	WB
Recommended Dilution:	WB: 1:1000~1:2000
Reactivity:	Human, Rat, Mouse
Host:	Rabbit
Isotype:	IgG
Clonality:	Polyclonal
Immunogen:	Synthetic peptide, corresponding to Human ICAM-5.
Specificity:	ICAM-5 polyclonal antibody detects endogenous levels of ICAM-5 protein.
Formulation:	Rabbit IgG, 1mg/ml in PBS with 0.02% sodium azide, 50% glycerol, pH7.2.
Concentration:	1mg/ml
Conjugation:	Unconjugated
Storage:	Store at 4°C short term. Aliquot and store at -20°C long term. Avoid freeze-thaw cycles.
Stability:	1 year
Predicted Protein Size:	~ 180 kDa
Gene Name:	intercellular adhesion molecule 5
Database Link:	Entrez Gene 7087 Human Q9UMF0



[View online »](#)

Background:

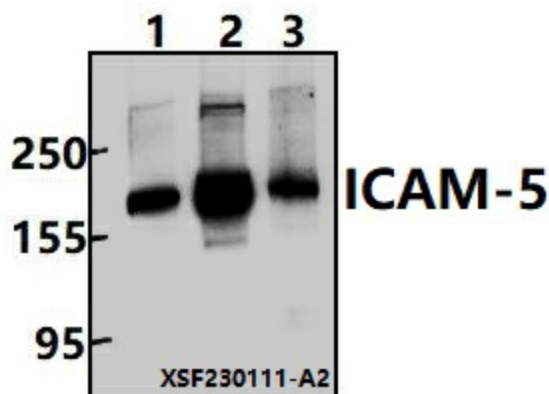
Cell adhesion molecules are a family of closely related cell surface glycoproteins involved in cell-cell interactions during growth and are thought to play important, yet separate, roles in embryogenesis and development. The intracellular adhesion molecule-1 (ICAM-1), also referred to as CD54, is an integral membrane protein of the immunoglobulin superfamily and recognizes the $\beta 2\alpha 1$ and $\beta 2\alpha M$ integrins. ICAM-2 functions as a ligand for lymphocyte function-associated antigen-1 (LFA-1) and is involved in leukocyte adhesion. ICAM-3 is highly expressed on the surface of human eosinophils, and when bound to ligand may inhibit eosinophil inflammatory responses and survival. ICAM-4, also known as LW glycoprotein, interacts with the integrins $\alpha L\beta 2$, $\alpha M\beta 2$, $\alpha 4\beta 1$, the αV family and $\alpha IIb\beta 3$, and selective binding to different integrins may be relevant to the pathology in a number of red blood cell associated diseases. Lastly, ICAM-5, expressed on telencephalic neurons, binds CD11a/CD18 and thus may act as an adhesion molecule for leukocyte binding in the central nervous system.

Synonyms:

ICAM-5; ICAM5; Intercellular adhesion molecule 5; Telencephalin; TLCN; TLN

Note:

For research use only, not for use in diagnostic procedure.

Product images:

Western blot (WB) analysis of ICAM-5 polyclonal antibody at 1:1000 dilution. Lane 1: Hela whole cell lysate (30ug), Lane 2: C6 whole cell lysate (30ug), Lane 3: BV2 whole cell lysate (30ug).