

## Product datasheet for **TA392411M**

### **MLK3 (MAP3K11) Rabbit Polyclonal Antibody**

#### **Product data:**

Product Type:	Primary Antibodies
Applications:	WB
Recommended Dilution:	WB: 1:1000~1:2000
Reactivity:	Human, Mouse
Host:	Rabbit
Isotype:	IgG
Clonality:	Polyclonal
Immunogen:	Synthetic peptide, corresponding to Human MLK3.
Specificity:	MLK3 polyclonal antibody detects endogenous levels of MLK3 protein.
Formulation:	Rabbit IgG, 1mg/ml in PBS with 0.02% sodium azide, 50% glycerol, pH7.2.
Concentration:	1mg/ml
Conjugation:	Unconjugated
Storage:	Store at 4°C short term. Aliquot and store at -20°C long term. Avoid freeze-thaw cycles.
Stability:	1 year
Predicted Protein Size:	~ 92 kDa
Gene Name:	mitogen-activated protein kinase kinase kinase 11
Database Link:	<a href="#">Entrez Gene 4296 Human Q16584</a>



[View online »](#)

**Background:**

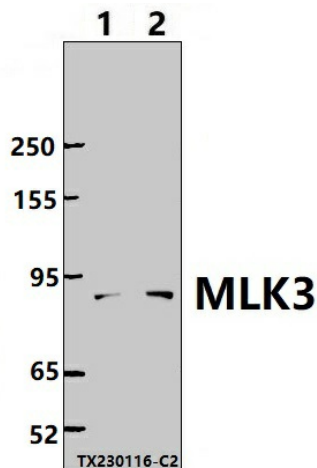
Mixed lineage kinase 3 (MLK3) is a serine/threonine kinase that has an amino-terminal SH3 domain followed by the kinase domain and two leucine zippers, a cdc42/Rac1 binding (CRIB) domain and several other domains/motifs at the carboxy-terminal region. CRIB triggers the dimerization of MLK3 via its tandem leucine zippers, followed by the intramolecular phosphorylation and subsequent activation of MLK3. Autophosphorylation of Thr277 and Ser281 is essential for MLK3 kinase activity. Ser281 is also phosphorylated by HPK in an in vitro kinase assay. MLK3 functions as a MAPKKK of the SAPK/JNK stress pathway by directly phosphorylating SEK1/MKK4 and MKK7, although it is controversial whether MLK3 is involved in p38 stress pathway activation. MLK3 also functions as an I $\kappa$ B kinase and mediates the activation of the transcriptional factor NF- $\kappa$ B stimulated by CD3/CD28, suggesting a role for MLK3 in immune and inflammatory responses.

**Synonyms:**

MAP3K11; Mitogen-activated protein kinase kinase kinase 11; Mixed lineage kinase 3; MLK3; PTK1; SPRK; Src-homology 3 domain-containing proline-rich kinase

**Note:**

For research use only, not for use in diagnostic procedure.

**Product images:**


Western blot (WB) analysis of MLK3 polyclonal antibody at 1:1000 dilution Lane1:HEK293T whole cell lysate(30ug) Lane2:NIH-3T3 whole cell lysate(30ug)