

## Product datasheet for **TA392410S**

### LFA3 (CD58) Rabbit Polyclonal Antibody

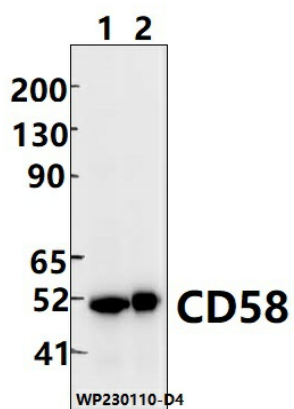
#### Product data:

Product Type:	Primary Antibodies
Applications:	WB
Recommended Dilution:	WB: 1:5000~1:10000
Reactivity:	Rat, Mouse
Host:	Rabbit
Isotype:	IgG
Clonality:	Polyclonal
Immunogen:	Recombinant protein of human CD58.
Specificity:	CD58 polyclonal antibody detects endogenous levels of CD58 protein.
Formulation:	Rabbit IgG, 1mg/ml in PBS with 0.02% sodium azide, 50% glycerol, pH7.2.
Concentration:	1mg/ml
Conjugation:	Unconjugated
Storage:	Store at 4°C short term. Aliquot and store at -20°C long term. Avoid freeze-thaw cycles.
Stability:	1 year
Predicted Protein Size:	~ 60 kDa
Gene Name:	CD58 molecule
Database Link:	<a href="#">P19256</a>
Background:	Ligand of the T-lymphocyte CD2 glycoprotein. This interaction is important in mediating thymocyte interactions with thymic epithelial cells, antigen-independent and -dependent interactions of T-lymphocytes with target cells and antigen-presenting cells and the T-lymphocyte rosetting with erythrocytes. In addition, the LFA-3/CD2 interaction may prime response by both the CD2+ and LFA-3+ cells.
Synonyms:	Ag3; CD58; Lymphocyte function-associated antigen 3; Surface glycoprotein LFA-3
Note:	For research use only, not for use in diagnostic procedure.



[View online »](#)

## Product images:



Western blot (WB) analysis of CD58 polyclonal antibody at 1:5000 dilution Lane1:The heart tissue lysate of Rat(30ug) Lane2:The heart tissue lysate of mouse(20ug)