

Product datasheet for **TA392410M**

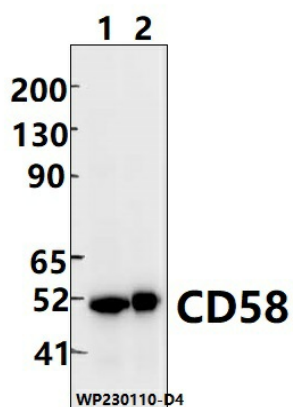
LFA3 (CD58) Rabbit Polyclonal Antibody

Product data:

| | |
|-------------------------|---|
| Product Type: | Primary Antibodies |
| Applications: | WB |
| Recommended Dilution: | WB: 1:5000~1:10000 |
| Reactivity: | Rat, Mouse |
| Host: | Rabbit |
| Isotype: | IgG |
| Clonality: | Polyclonal |
| Immunogen: | Recombinant protein of human CD58. |
| Specificity: | CD58 polyclonal antibody detects endogenous levels of CD58 protein. |
| Formulation: | Rabbit IgG, 1mg/ml in PBS with 0.02% sodium azide, 50% glycerol, pH7.2. |
| Concentration: | 1mg/ml |
| Conjugation: | Unconjugated |
| Storage: | Store at 4°C short term. Aliquot and store at -20°C long term. Avoid freeze-thaw cycles. |
| Stability: | 1 year |
| Predicted Protein Size: | ~ 60 kDa |
| Gene Name: | CD58 molecule |
| Database Link: | P19256 |
| Background: | Ligand of the T-lymphocyte CD2 glycoprotein. This interaction is important in mediating thymocyte interactions with thymic epithelial cells, antigen-independent and -dependent interactions of T-lymphocytes with target cells and antigen-presenting cells and the T-lymphocyte rosetting with erythrocytes. In addition, the LFA-3/CD2 interaction may prime response by both the CD2+ and LFA-3+ cells. |
| Synonyms: | Ag3; CD58; Lymphocyte function-associated antigen 3; Surface glycoprotein LFA-3 |
| Note: | For research use only, not for use in diagnostic procedure. |

[View online »](#)

Product images:



Western blot (WB) analysis of CD58 polyclonal antibody at 1:5000 dilution Lane1:The heart tissue lysate of Rat(30ug) Lane2:The heart tissue lysate of mouse(20ug)