

## Product datasheet for **TA392409**

### SIGLEC6 Rabbit Polyclonal Antibody

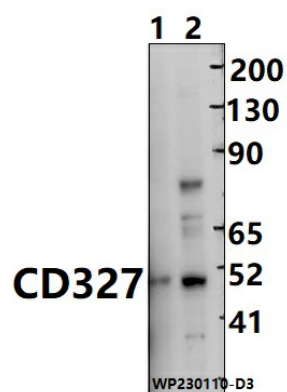
#### Product data:

Product Type:	Primary Antibodies
Applications:	WB
Recommended Dilution:	WB: 1:1000~1:2000
Reactivity:	Mouse, Human
Host:	Rabbit
Isotype:	IgG
Clonality:	Polyclonal
Immunogen:	Recombinant protein of human CD327.
Specificity:	CD327 polyclonal antibody detects endogenous levels of CD327 protein.
Formulation:	Rabbit IgG, 1mg/ml in PBS with 0.02% sodium azide, 50% glycerol, pH7.2.
Concentration:	1mg/ml
Conjugation:	Unconjugated
Storage:	Store at 4°C short term. Aliquot and store at -20°C long term. Avoid freeze-thaw cycles.
Stability:	1 year
Predicted Protein Size:	~ 50 kDa
Gene Name:	sialic acid binding Ig like lectin 6
Database Link:	<a href="#">Entrez Gene 946 Human O43699</a>
Background:	Putative adhesion molecule that mediates sialic-acid dependent binding to cells. Binds to alpha-2,6-linked sialic acid. The sialic acid recognition site may be masked by cis interactions with sialic acids on the same cell surface.
Synonyms:	CD33 antigen-like 1; CD327; CDw327; OB-BP1; Obesity-binding protein 1; Sialic acid-binding Ig-like lectin 6; Siglec-6
Note:	For research use only, not for use in diagnostic procedure.



[View online »](#)

## Product images:



Western blot (WB) analysis of CD327 polyclonal antibody at 1:2000 dilution Lane1:The brain tissue lysate of mouse(30ug) Lane2:SGC7901 whole cell lysate(20ug)