

## Product datasheet for **TA392408**

### CD105 (ENG) Rabbit Polyclonal Antibody

#### Product data:

Product Type:	Primary Antibodies
Applications:	WB
Recommended Dilution:	WB: 1:1000~1:2000
Reactivity:	Human, Mouse
Host:	Rabbit
Isotype:	IgG
Clonality:	Polyclonal
Immunogen:	Recombinant protein of human CD105.
Specificity:	CD105 polyclonal antibody detects endogenous levels of CD105 protein.
Formulation:	Rabbit IgG, 1mg/ml in PBS with 0.02% sodium azide, 50% glycerol, pH7.2.
Concentration:	1mg/ml
Conjugation:	Unconjugated
Storage:	Store at 4°C short term. Aliquot and store at -20°C long term. Avoid freeze-thaw cycles.
Stability:	1 year
Predicted Protein Size:	~90 kDa
Gene Name:	endoglin
Database Link:	<a href="#">Entrez Gene 2022 Human P17813</a>
Background:	Vascular endothelium glycoprotein that plays an important role in the regulation of angiogenesis .Required for normal structure and integrity of adult vasculature .Regulates the migration of vascular endothelial cells .Required for normal extraembryonic angiogenesis and for embryonic heart development (By similarity).May regulate endothelial cell shape changes in response to blood flow, which drive vascular remodeling and establishment of normal vascular morphology during angiogenesis (By similarity).May play a critical role in the binding of endothelial cells to integrins and/or other RGD receptors .Acts as TGF-beta coreceptor and is involved in the TGF-beta/BMP signaling cascade that ultimately leads to the activation of SMAD transcription factors .Required for GDF2/BMP9 signaling through SMAD1 in endothelial cells and modulates TGFB1 signaling through SMAD3.

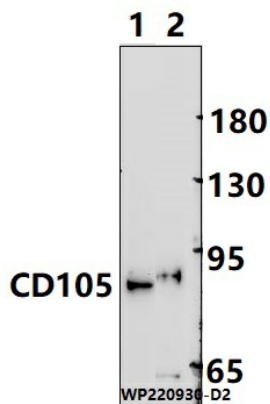


[View online »](#)

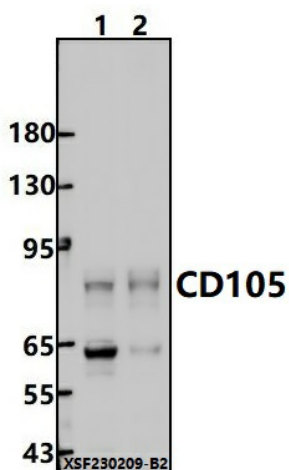
**Synonyms:** CD105; Endoglin

**Note:** For research use only, not for use in diagnostic procedure.

**Product images:**



Western blot (WB) analysis of CD105 polyclonal antibody at 1:1000 dilution Lane1:MCF-7 cell membrane lysate(20ug) Lane2:A549 cell membrane lysate(30ug)



Western blot (WB) analysis of CD105 polyclonal antibody at 1:1000 dilution Lane1:A549 whole cell lysate(40ug) Lane2:CT-26 whole cell lysate(40ug)