

## Product datasheet for TA392406M

### CD31 (PECAM1) Rabbit Polyclonal Antibody

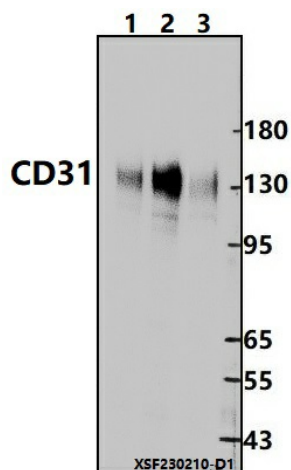
#### Product data:

Product Type:	Primary Antibodies
Applications:	WB
Recommended Dilution:	WB: 1:5000~1:10000
Reactivity:	Human
Host:	Rabbit
Isotype:	IgG
Clonality:	Polyclonal
Immunogen:	Recombinant protein of human CD31.
Specificity:	CD31 polyclonal antibody detects endogenous levels of CD31 protein.
Formulation:	Rabbit IgG, 1mg/ml in PBS with 0.02% sodium azide, 50% glycerol, pH7.2.
Concentration:	1mg/ml
Conjugation:	Unconjugated
Storage:	Store at 4°C short term. Aliquot and store at -20°C long term. Avoid freeze-thaw cycles.
Stability:	1 year
Predicted Protein Size:	~ 130 kDa
Gene Name:	platelet and endothelial cell adhesion molecule 1
Database Link:	<a href="#">Entrez Gene 5175 Human P16284</a>
Background:	CD31 (Platelet Endothelial Cell Adhesion Molecule-1: PECAM-1), a member of the Ig superfamily of cell adhesion molecules, is expressed by circulating platelets, monocytes, neutrophils, some T cells, and endothelial cells and modulates cell adhesion, endothelial cell migration, and angiogenesis. CD31 is phosphorylated on Tyr686 at the cytoplasmic carboxy-terminal tail upon various stimuli (e.g. mechanical or oxidative stress), presumably by Src family members. The tyrosine phosphorylation mediates associations with a number of SH2 domain-containing binding partners such as PI3 kinase, SHIP, PLCy, and SHP-2. Thus, CD31 serves as a scaffold for various signaling molecules.
Synonyms:	CD31; EndoCAM; GPIIA'; PECA1; PECAM-1; PECAM1; Platelet endothelial cell adhesion molecule


[View online »](#)

**Note:** For research use only, not for use in diagnostic procedure.

**Product images:**



Western blot (WB) analysis of CD31 polyclonal antibody at 1:5000 dilution Lane1:Jurkat whole cell lysate(30ug) Lane2:THP-1 whole cell lysate(30ug) Lane3:A549 whole cell lysate(30ug)