

## Product datasheet for **TA392405S**

### Peptidase inhibitor 16 (PI16) Rabbit Polyclonal Antibody

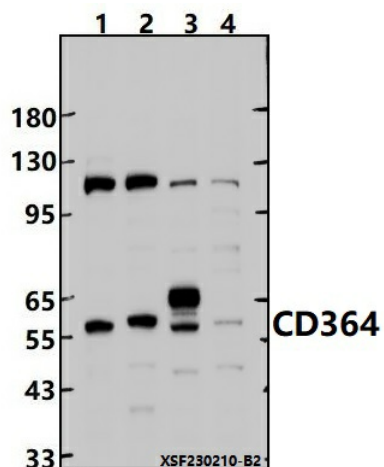
#### Product data:

Product Type:	Primary Antibodies
Applications:	WB
Recommended Dilution:	WB: 1:1000~1:2000
Reactivity:	Human, Rat, Mouse
Host:	Rabbit
Isotype:	IgG
Clonality:	Polyclonal
Immunogen:	Recombinant protein of human CD364.
Specificity:	CD364 polyclonal antibody detects endogenous levels of CD364 protein.
Formulation:	Rabbit IgG, 1mg/ml in PBS with 0.02% sodium azide, 50% glycerol, pH7.2.
Concentration:	1mg/ml
Conjugation:	Unconjugated
Storage:	Store at 4°C short term. Aliquot and store at -20°C long term. Avoid freeze-thaw cycles.
Stability:	1 year
Predicted Protein Size:	~ 55 kDa
Gene Name:	peptidase inhibitor 16
Database Link:	<a href="#">Entrez Gene 221476 Human Q6UXB8</a>
Background:	May inhibit cardiomyocyte growth.
Synonyms:	CD364; CRISP-9; CRISP9; Cysteine-rich secretory protein 9; Peptidase inhibitor 16; PI-16; PI16; PSEC0164; PSP94-binding protein; PSPBP; UNQ289/PRO328
Note:	For research use only, not for use in diagnostic procedure.



[View online »](#)

## Product images:



Western blot (WB) analysis of CD364 polyclonal antibody at 1:1000 dilution Lane1:Jurkat whole cell lysate(30ug) Lane2:HuT78 whole cell lysate(30ug) Lane3:SP2/0 whole cell lysate(30ug) Lane4:C6 whole cell lysate(30ug)