

## Product datasheet for **TA392404M**

### KIR2DS2 Rabbit Polyclonal Antibody

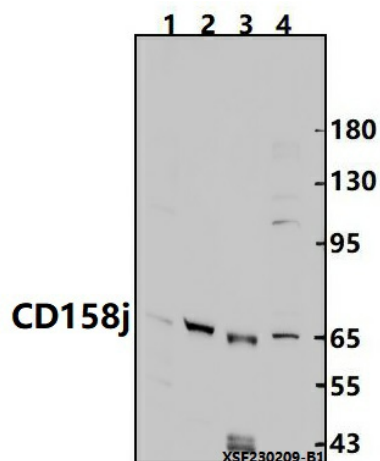
#### Product data:

Product Type:	Primary Antibodies
Applications:	WB
Recommended Dilution:	WB: 1:1000~1:2000
Reactivity:	Human, Mouse
Host:	Rabbit
Isotype:	IgG
Clonality:	Polyclonal
Immunogen:	Recombinant protein of human CD158j.
Specificity:	CD158j polyclonal antibody detects endogenous levels of CD158j protein.
Formulation:	Rabbit IgG, 1mg/ml in PBS with 0.02% sodium azide, 50% glycerol, pH7.2.
Concentration:	1mg/ml
Conjugation:	Unconjugated
Storage:	Store at 4°C short term. Aliquot and store at -20°C long term. Avoid freeze-thaw cycles.
Stability:	1 year
Predicted Protein Size:	~ 65 kDa
Gene Name:	killer cell immunoglobulin like receptor, two Ig domains and short cytoplasmic tail 2
Database Link:	<a href="#">Entrez Gene 100132285 Human P43631</a>
Background:	Receptor on natural killer (NK) cells for HLA-C alleles. Does not inhibit the activity of NK cells.
Synonyms:	CD158 antigen-like family member J; CD158j; CD158j; Killer cell immunoglobulin-like receptor 2DS2; KIR2DS2; Natural killer-associated transcript 5; NKAT-5; NKAT5; NK receptor 183 Act1; p58 natural killer cell receptor clone CL-49; p58 NK receptor CL-49
Note:	For research use only, not for use in diagnostic procedure.



[View online »](#)

## Product images:



Western blot (WB) analysis of CD158j polyclonal antibody at 1:1000 dilution Lane1:H1792 whole cell lysate(30ug) Lane2:L02 cell membrane lysate(24ug) Lane3:The Liver tissue lysate of Mouse(30ug) Lane4:A549 whole cell lysate(30ug)