

## Product datasheet for **TA392402**

### CD27 Rabbit Polyclonal Antibody

#### Product data:

Product Type:	Primary Antibodies
Applications:	WB
Recommended Dilution:	WB: 1:1000~1:2000
Reactivity:	Human, Rat, Mouse
Host:	Rabbit
Isotype:	IgG
Clonality:	Polyclonal
Immunogen:	Recombinant protein of human CD27.
Specificity:	CD27 polyclonal antibody detects endogenous levels of CD27 protein.
Formulation:	Rabbit IgG, 1mg/ml in PBS with 0.02% sodium azide, 50% glycerol, pH7.2.
Concentration:	1mg/ml
Conjugation:	Unconjugated
Storage:	Store at 4°C short term. Aliquot and store at -20°C long term. Avoid freeze-thaw cycles.
Stability:	1 year
Predicted Protein Size:	~ 65 kDa
Gene Name:	CD27 molecule
Database Link:	<a href="#">Entrez Gene 939 Human P26842</a>



[View online »](#)

**Background:**

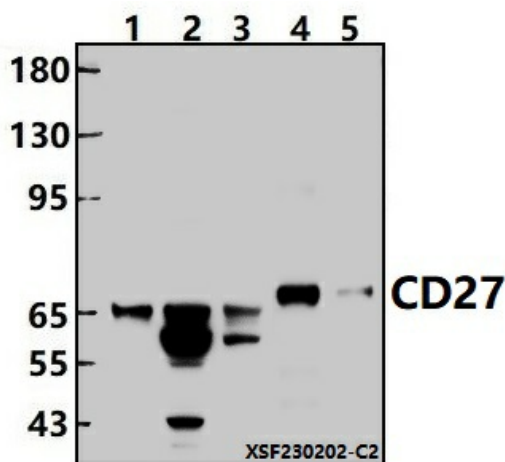
CD27 (TNFRSF7) is a transmembrane protein of the TNF receptor superfamily (TNFRSF). It is mainly expressed on lymphoid cells (also on early hematopoietic precursor cells in mice). CD27 is considered a phenotypic marker for memory B cells and is also used to identify B regulatory (Breg) cells. It is constitutively expressed on naive CD4 and CD8 T cells and its expression is further upregulated upon T cell activation. CD27 is one of the two most important co-stimulatory receptors for T cell priming (the other one is CD28). While CD28 co-stimulatory signal mainly triggers cell proliferation, CD27 co-stimulatory signal primarily promotes cell survival and differentiation. Upon binding to its ligand CD70, CD27 activates the NF- $\kappa$ B and JNK signaling pathways through TNFR associated factors (TRAFs), the adaptor molecules that are associated with CD27 cytoplasmic tail domain. Upon activation CD27 is shed from cell surface and soluble CD27 is used as a marker of T cell activation.

**Synonyms:**

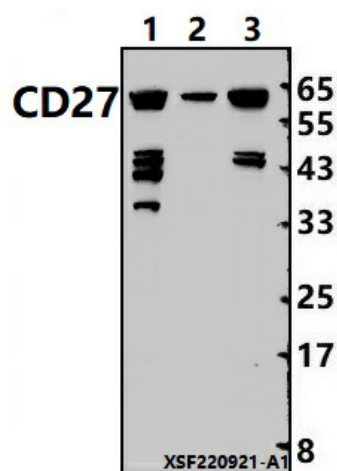
CD27; CD27 antigen; CD27L receptor; T-cell activation antigen CD27; T14; TNFRSF7; Tumor necrosis factor receptor superfamily member 7

**Note:**

For research use only, not for use in diagnostic procedure.

**Product images:**

Western blot (WB) analysis of CD27 polyclonal antibody at 1:1000 dilution Lane1:EC9706 cell membrane lysate(24ug) Lane2:A549 whole cell lysate(30ug) Lane3:SGC7901 whole cell lysate(30ug) Lane4:The Heart tissue lysate of Mouse(30ug) Lane5:The Kidney tissue lysate of Rat(30ug)



Western blot (WB) analysis of CD27 polyclonal antibody at 1:1000 dilution Lane1:A549 cell membrane lysate(24ug) Lane2:EC9706 cell membrane lysate(24ug) Lane3:SGC7901 cell membrane lysate(24ug)