

## Product datasheet for **TA392398M**

### PP2A-alpha (PPP2CA) Rabbit Polyclonal Antibody

#### Product data:

Product Type:	Primary Antibodies
Applications:	WB
Recommended Dilution:	WB: 1:1000~1:2000
Reactivity:	Rat, Mouse, Human
Host:	Rabbit
Isotype:	IgG
Clonality:	Polyclonal
Immunogen:	Synthetic peptide, corresponding to Human PP2A- $\alpha$ .
Specificity:	PP2A- $\alpha$ polyclonal antibody detects endogenous levels of PP2A- $\alpha$ protein.
Formulation:	Rabbit IgG, 1mg/ml in PBS with 0.02% sodium azide, 50% glycerol, pH7.2.
Concentration:	1mg/ml
Conjugation:	Unconjugated
Storage:	Store at 4°C short term. Aliquot and store at -20°C long term. Avoid freeze-thaw cycles.
Stability:	1 year
Predicted Protein Size:	~ 35 kDa
Gene Name:	protein phosphatase 2 catalytic subunit alpha
Database Link:	<a href="#">Entrez Gene 5515 Human P67775</a>

[View online »](#)

**Background:**

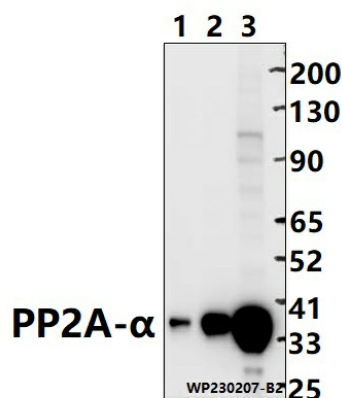
PP2A is the major phosphatase for microtubule-associated proteins (MAPs). PP2A can modulate the activity of phosphorylase B kinase casein kinase 2, mitogen-stimulated S6 kinase, and MAP-2 kinase. Cooperates with SGO2 to protect centromeric cohesin from separase-mediated cleavage in oocytes specifically during meiosis I (By similarity). Can dephosphorylate SV40 large T antigen and p53/TP53. Activates RAF1 by dephosphorylating it at 'Ser-259'. Mediates dephosphorylation of WEE1, preventing its ubiquitin-mediated proteolysis, increasing WEE1 protein levels, and promoting the G2/M checkpoint. Mediates dephosphorylation of MYC; promoting its ubiquitin-mediated proteolysis: interaction with AMBRA1 enhances interaction between PPP2CA and MYC. Mediates dephosphorylation of FOXO3; promoting its stabilization: interaction with AMBRA1 enhances interaction between PPP2CA and FOXO3.

**Synonyms:**

PP2A-alpha; Replication protein C; RP-C; Serine/threonine-protein phosphatase 2A catalytic subunit alpha isoform

**Note:**

For research use only, not for use in diagnostic procedure.

**Product images:**


Western blot (WB) analysis of PP2A- $\alpha$  polyclonal antibody at 1:1000 dilution Lane1: The liver tissue lysate of mouse (30ug) Lane2: The heart tissue lysate of Rat (30ug) Lane3: K562 whole cell lysate (30ug)