

Product datasheet for **TA392397S**

UCP2 Rabbit Polyclonal Antibody

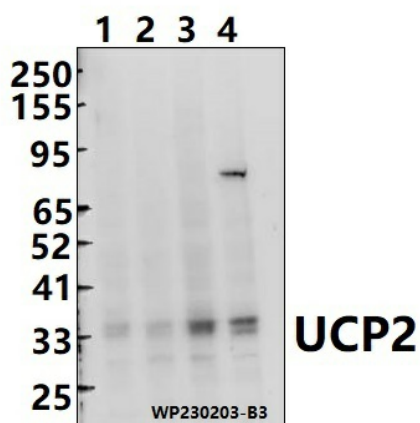
Product data:

Product Type:	Primary Antibodies
Applications:	WB
Recommended Dilution:	WB: 1:1000~1:2000
Reactivity:	Rat, Mouse, Human
Host:	Rabbit
Isotype:	IgG
Clonality:	Polyclonal
Immunogen:	Synthetic peptide, corresponding to Human UCP2 .
Specificity:	UCP2 (H113) polyclonal antibody detects endogenous levels of UCP2 protein.
Formulation:	Rabbit IgG, 1mg/ml in PBS with 0.02% sodium azide, 50% glycerol, pH7.2.
Concentration:	1mg/ml
Conjugation:	Unconjugated
Storage:	Store at 4°C short term. Aliquot and store at -20°C long term. Avoid freeze-thaw cycles.
Stability:	1 year
Predicted Protein Size:	~ 33 kDa
Gene Name:	uncoupling protein 2
Database Link:	Entrez Gene 7351 Human P55851
Background:	UCP are mitochondrial transporter proteins that create proton leaks across the inner mitochondrial membrane, thus uncoupling oxidative phosphorylation from ATP synthesis. As a result, energy is dissipated in the form of heat.
Synonyms:	Mitochondrial uncoupling protein 2; Solute carrier family 25 member 8; UCP 2; UCPH
Note:	For research use only, not for use in diagnostic procedure.



[View online »](#)

Product images:



Western blot (WB) analysis of UCP2 (H113) polyclonal antibody at 1:1000 dilution
Lane1:MCF-7 whole cell lysate(30ug)
Lane2:RAW264.7 whole cell lysate(30ug)
Lane3:A549 whole cell lysate(30ug) Lane4:PC12 whole cell lysate(30ug)