

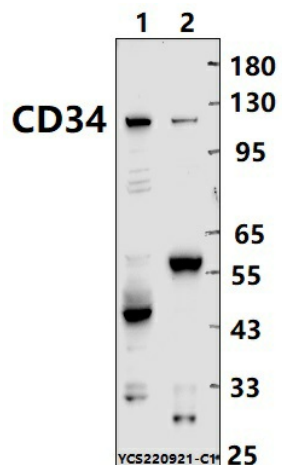
## Product datasheet for **TA392393M**

### CD34 Rabbit Polyclonal Antibody

#### Product data:

Product Type:	Primary Antibodies
Applications:	WB
Recommended Dilution:	WB: 1:1000~1:2000
Reactivity:	Human
Host:	Rabbit
Isotype:	IgG
Clonality:	Polyclonal
Immunogen:	Recombinant protein of human CD34.
Specificity:	CD34 polyclonal antibody detects endogenous levels of CD34 protein.
Formulation:	Rabbit IgG, 1mg/ml in PBS with 0.02% sodium azide, 50% glycerol, pH7.2.
Concentration:	1mg/ml
Conjugation:	Unconjugated
Storage:	Store at 4°C short term. Aliquot and store at -20°C long term. Avoid freeze-thaw cycles.
Stability:	1 year
Predicted Protein Size:	~ 110 kDa
Gene Name:	CD34 molecule
Database Link:	<a href="#">Entrez Gene 947 Human P28906</a>
Background:	Possible adhesion molecule with a role in early hematopoiesis by mediating the attachment of stem cells to the bone marrow extracellular matrix or directly to stromal cells. Could act as a scaffold for the attachment of lineage specific glycans, allowing stem cells to bind to lectins expressed by stromal cells or other marrow components. Presents carbohydrate ligands to selectins.
Synonyms:	CD34; Hematopoietic progenitor cell antigen CD34
Note:	For research use only, not for use in diagnostic procedure.

[View online »](#)

**Product images:**


Western blot (WB) analysis of CD34 polyclonal antibody at 1:1000 dilution Lane1:A549 cell membrane lysate(30ug) Lane2:THP-1 whole cell lysate(30ug)