

Product datasheet for **TA392392**

MCK10 (DDR1) Rabbit Polyclonal Antibody

Product data:

Product Type:	Primary Antibodies
Applications:	WB
Recommended Dilution:	WB: 1:1000~1:2000
Reactivity:	Human, Rat, Mouse
Host:	Rabbit
Isotype:	IgG
Clonality:	Polyclonal
Immunogen:	Recombinant protein of human CD167a.
Specificity:	CD167a polyclonal antibody detects endogenous levels of CD167a protein.
Formulation:	Rabbit IgG, 1mg/ml in PBS with 0.02% sodium azide, 50% glycerol, pH7.2.
Concentration:	1mg/ml
Conjugation:	Unconjugated
Storage:	Store at 4°C short term. Aliquot and store at -20°C long term. Avoid freeze-thaw cycles.
Stability:	1 year
Predicted Protein Size:	~ 95 kDa
Gene Name:	discoidin domain receptor tyrosine kinase 1
Database Link:	Entrez Gene 780 Human Q08345
Background:	Tyrosine kinase that functions as cell surface receptor for fibrillar collagen and regulates cell attachment to the extracellular matrix, remodeling of the extracellular matrix, cell migration, differentiation, survival and cell proliferation. Collagen binding triggers a signaling pathway that involves SRC and leads to the activation of MAP kinases. Regulates remodeling of the extracellular matrix by up-regulation of the matrix metalloproteinases MMP2, MMP7 and MMP9, and thereby facilitates cell migration and wound healing. Required for normal blastocyst implantation during pregnancy, for normal mammary gland differentiation and normal lactation. Required for normal ear morphology and normal hearing.



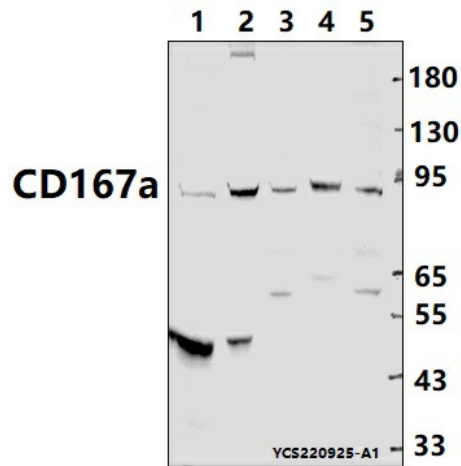
[View online »](#)

Synonyms:

CAK, EDDR1, NEP, NTRK4, PTK3A, RTK6, TRKE; CD167 antigen-like family member A; Cell adhesion kinase; DDR1; Discoidin receptor tyrosine kinase; Epithelial discoidin domain-containing receptor 1; Epithelial discoidin domain receptor 1; HGK2; Mammary carcinoma kinase 10; MCK-10; Protein-tyrosine kinase 3A; Protein-tyrosine kinase RTK-6; TRK E; Tyrosine-protein kinase CAK; Tyrosine kinase DDR

Note:

For research use only, not for use in diagnostic procedure.

Product images:


Western blot (WB) analysis of CD167a polyclonal antibody at 1:1000 dilution Lane1:BV2 whole cell lysate(30ug) Lane2:PC12 whole cell lysate(30ug) Lane3:MCF-7 whole cell lysate(30ug) Lane4:A375 whole cell lysate(30ug) Lane5:HEK293T whole cell lysate(30ug)