

Product datasheet for **TA392391M**

B Raf (BRAF) Rabbit Polyclonal Antibody

Product data:

Product Type:	Primary Antibodies
Applications:	WB
Recommended Dilution:	WB: 1:1000~1:2000
Reactivity:	Human, Rat, Mouse
Host:	Rabbit
Isotype:	IgG
Clonality:	Polyclonal
Immunogen:	Synthetic peptide, corresponding to Human Raf-B.
Specificity:	Raf-B (F594) polyclonal antibody detects endogenous levels of Raf-B protein.
Formulation:	Rabbit IgG, 1mg/ml in PBS with 0.02% sodium azide, 50% glycerol, pH7.2.
Concentration:	1mg/ml
Conjugation:	Unconjugated
Storage:	Store at 4°C short term. Aliquot and store at -20°C long term. Avoid freeze-thaw cycles.
Stability:	1 year
Predicted Protein Size:	~ 84 kDa
Gene Name:	B-Raf proto-oncogene, serine/threonine kinase
Database Link:	Entrez Gene 673 Human P15056

[View online »](#)

Background:

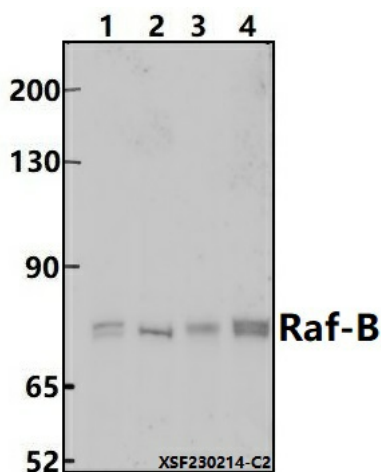
A-Raf, B-Raf, and c-Raf (Raf-1) are the main effectors recruited by GTP-bound Ras to activate the MEK-MAP kinase pathway. Activation of c-Raf is the best understood and involves phosphorylation at multiple activating sites, including Ser338, Tyr341, Thr491, Ser494, Ser497, and Ser499. p21-activated kinase (PAK) has been shown to phosphorylate c-Raf at Ser338, and the Src family phosphorylates Tyr341 to induce c-Raf activity. Ser338 of c-Raf corresponds to similar sites in A-Raf (Ser299) and B-Raf (Ser445), although this site is constitutively phosphorylated in B-Raf. Inhibitory 14-3-3 binding sites on c-Raf (Ser259 and Ser621) can be phosphorylated by Akt and AMPK, respectively. While A-Raf, B-Raf, and c-Raf are similar in sequence and function, differential regulation has been observed. Of particular interest, B-Raf contains three consensus Akt phosphorylation sites (Ser364, Ser428, and Thr439) and lacks a site equivalent to Tyr341 of c-Raf. Research studies have shown that the B-Raf mutation V600E results in elevated kinase activity and is commonly found in malignant melanoma. Six residues of c-Raf (Ser29, Ser43, Ser289, Ser296, Ser301, and Ser642) become hyperphosphorylated in a manner consistent with c-Raf inactivation. The hyperphosphorylation of these six sites is dependent on downstream MEK signaling and renders c-Raf unresponsive to subsequent activation events.

Synonyms:

BRAF; BRAF1; p94; Proto-oncogene B-Raf; RAFB1; Serine/threonine-protein kinase B-raf; v-Raf murine sarcoma viral oncogene homolog B1

Note:

For research use only, not for use in diagnostic procedure.

Product images:


Western blot (WB) analysis of Raf-B (F594) polyclonal antibody at 1:1000 dilution Lane1:K562 cell membrane lysate(24ug) Lane2:The Lung tissue lysate of Mouse(30ug) Lane3:BV2 whole cell lysate(30ug) Lane4:PC12 whole cell lysate(30ug)