

Product datasheet for **TA392389S**

CD68 Rabbit Polyclonal Antibody

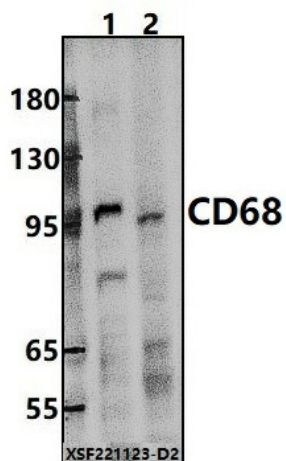
Product data:

Product Type:	Primary Antibodies
Applications:	WB
Recommended Dilution:	WB: 1:2000~1:5000
Reactivity:	Human
Host:	Rabbit
Isotype:	IgG
Clonality:	Polyclonal
Immunogen:	Recombinant protein of human CD68.
Specificity:	CD68 polyclonal antibody detects endogenous levels of CD68 protein.
Formulation:	Rabbit IgG, 1mg/ml in PBS with 0.02% sodium azide, 50% glycerol, pH7.2.
Concentration:	1mg/ml
Conjugation:	Unconjugated
Storage:	Store at 4°C short term. Aliquot and store at -20°C long term. Avoid freeze-thaw cycles.
Stability:	1 year
Predicted Protein Size:	~ 100 kDa
Gene Name:	CD68 molecule
Database Link:	Entrez Gene 968 Human P34810
Background:	CD68 (macrosialin) is a heavily glycosylated transmembrane protein that is expressed by and commonly used as a marker for monocytes and macrophages. It is found on the plasma membrane, as well as endosomal and lysosomal membranes. It is proposed to bind OxLDL and has been observed as a homodimer.
Synonyms:	CD68; Gp110; Macrosialin
Note:	For research use only, not for use in diagnostic procedure.



[View online »](#)

Product images:



Western blot (WB) analysis of CD68 polyclonal antibody at 1:5000 dilution Lane1:L02 cell membrane lysate(24ug) Lane2:A549 whole cell lysate(30ug)