

## Product datasheet for **TA389656**

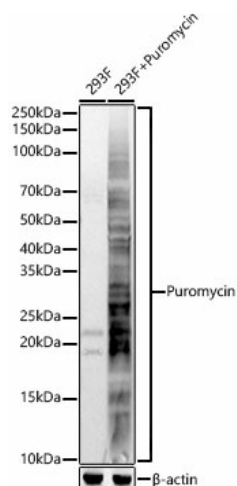
### Puromycin Rabbit Polyclonal Antibody

#### Product data:

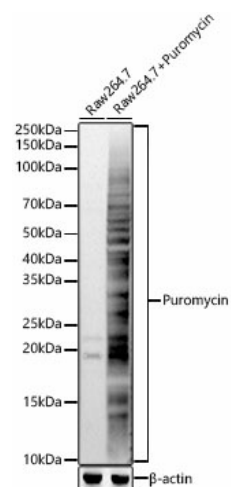
|                       |   |
|-----------------------|---|
| Product Type:         | Primary Antibodies  |
| Applications:         | ELISA, WB   |
| Recommended Dilution: | WB, 1:1000 - 1:5000<br>ELISA, Recommended starting concentration is 1 µg/mL. Please optimize the concentration based on your specific assay requirements.   |
| Reactivity:           | Species independent   |
| Host:                 | Rabbit  |
| Isotype:              | IgG   |
| Clonality:            | Polyclonal  |
| Formulation:          | Buffer: PBS with 0.05% proclin300, 50% glycerol, pH7.3.   |
| Concentration:        | lot specific  |
| Purification:         | Affinity purification   |
| Conjugation:          | Unconjugated  |
| Storage:              | Store at -20°C. Avoid freeze / thaw cycles.   |
| Stability:            | Stable for 12 months from date of receipt.  |
| Background:           | Puromycin is a tyrosyl-tRNA mimic that blocks translation by labeling and releasing elongating polypeptide chains from translating ribosomes. Puromycin has been used in molecular biology research for decades as a translation inhibitor. More recently, in vivo puromycylation assays have become popular tools for localizing translating ribosomes in cells. These assays often use elongation inhibitors to purportedly inhibit the release of puromycin-labeled nascent peptides from ribosomes. |

[View online »](#)

## Product images:



Western blot analysis of lysates from 293F cells



Western blot analysis of lysates from RAW264.7 cells