

Product datasheet for **TA389646**

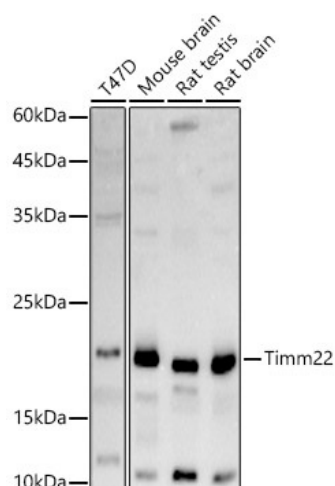
Timm22 Rabbit Polyclonal Antibody

Product data:

Product Type:	Primary Antibodies
Applications:	ELISA, IP, WB
Recommended Dilution:	WB, 1:500 - 1:1000 IP, 0.5µg-4µg antibody for 400µg-600µg extracts of whole cells ELISA, Recommended starting concentration is 1 µg/mL. Please optimize the concentration based on your specific assay requirements.
Reactivity:	Human, Mouse, Rat
Host:	Rabbit
Isotype:	IgG
Clonality:	Polyclonal
Formulation:	Buffer: PBS with 0.05% proclin300, 50% glycerol, pH7.3.
Concentration:	lot specific
Purification:	Affinity purification
Conjugation:	Unconjugated
Storage:	Store at -20°C. Avoid freeze / thaw cycles.
Stability:	Stable for 12 months from date of receipt.
Predicted Protein Size:	20kDa
Gene Name:	translocase of inner mitochondrial membrane 22
Database Link:	Entrez Gene 56322 Mouse Q9CQ85
Background:	Predicted to enable mitochondrion targeting sequence binding activity and protein transmembrane transporter activity. Predicted to be involved in protein insertion into mitochondrial inner membrane. Predicted to act upstream of or within protein transport. Located in mitochondrion. Is expressed in several structures, including alimentary system; brain; cardiovascular system; egg cylinder; and genitourinary system. Human ortholog(s) of this gene implicated in combined oxidative phosphorylation deficiency 43. Orthologous to human TIMM22 (translocase of inner mitochondrial membrane 22).
Synonyms:	TEX4; TIM22


[View online »](#)

Product images:



Western blot analysis of various lysates using Timm22 Rabbit pAb (TA389646) at 1:1000 dilution.

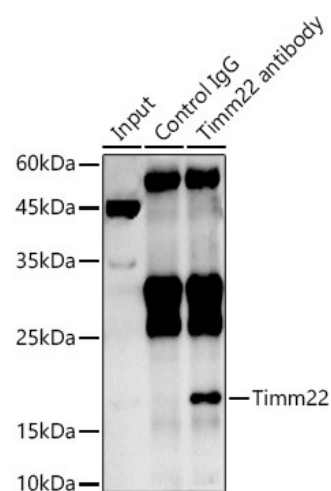
Secondary antibody: HRP-conjugated Goat anti-Rabbit IgG (H+L) (AS014) at 1:10000 dilution.

Lysates/proteins: 25µg per lane.

Blocking buffer: 3% nonfat dry milk in TBST.

Detection: ECL Basic Kit (RM00020).

Exposure time: 180s.



Immunoprecipitation analysis of 600 µg extracts of Rat brain cells using 3 µg Timm22 antibody (TA389646). Western blot was performed from the immunoprecipitate using Timm22 antibody (TA389646) at a dilution of 1:500.