

Product datasheet for **TA389645**

Timm29 Rabbit Polyclonal Antibody

Product data:

Product Type:	Primary Antibodies
Applications:	ELISA, IP, WB
Recommended Dilution:	WB, 1:500 – 1:1000 IP, 0.5µg–4µg antibody for 200µg–400µg extracts of whole cells ELISA, Recommended starting concentration is 1 µg/mL. Please optimize the concentration based on your specific assay requirements.
Reactivity:	Human, Mouse
Host:	Rabbit
Isotype:	IgG
Clonality:	Polyclonal
Formulation:	Buffer: PBS with 0.05% proclin300, 50% glycerol, pH7.3.
Concentration:	lot specific
Purification:	Affinity purification
Conjugation:	Unconjugated
Storage:	Store at -20°C. Avoid freeze / thaw cycles.
Stability:	Stable for 12 months from date of receipt.
Predicted Protein Size:	29kDa
Gene Name:	RIKEN cDNA 1810026J23 gene
Database Link:	Entrez Gene 69773 Mouse Q8BGX2



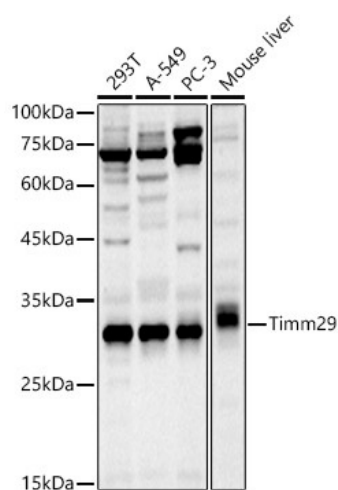
Background:

Predicted to enable protein transporter activity. Predicted to be involved in protein insertion into mitochondrial inner membrane. Predicted to act upstream of or within protein transport. Predicted to be located in mitochondrial inner membrane and mitochondrial intermembrane space. Predicted to be part of TIM22 mitochondrial import inner membrane insertion complex. Orthologous to human TIMM29 (translocase of inner mitochondrial membrane 29).

Synonyms:

1810026J23Rik

Product images:



Western blot analysis of various lysates using Timm29 Rabbit pAb (TA389645) at 1:1000 dilution.

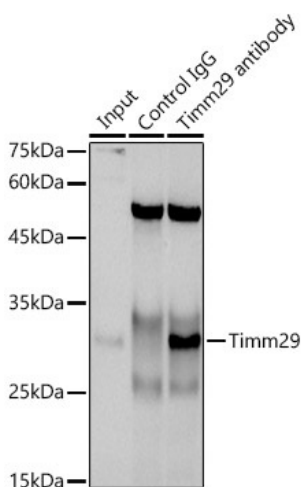
Secondary antibody: HRP-conjugated Goat anti-Rabbit IgG (H+L) at 1:10000 dilution.

Lysates/proteins: 25µg per lane.

Blocking buffer: 3% nonfat dry milk in TBST.

Detection: ECL Basic Kit .

Exposure time: 120s.



Immunoprecipitation analysis of 300 µg extracts of A-549 cells using 3 µg Timm29 antibody (TA389645). Western blot was performed from the immunoprecipitate using Timm29 antibody (TA389645) at a dilution of 1:1000.