

## Product datasheet for **TA389623**

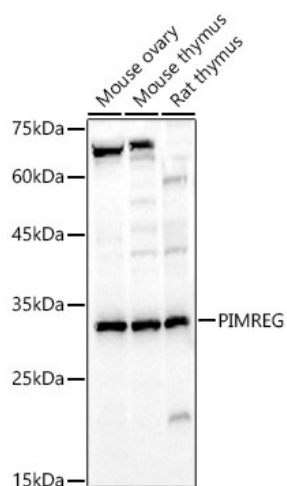
### PIMREG Rabbit Polyclonal Antibody

#### Product data:

Product Type:	Primary Antibodies
Applications:	ELISA, WB
Recommended Dilution:	WB, 1:500 - 1:1000 ELISA, Recommended starting concentration is 1 µg/mL. Please optimize the concentration based on your specific assay requirements.
Reactivity:	Human, Mouse, Rat
Host:	Rabbit
Isotype:	IgG
Clonality:	Polyclonal
Formulation:	Buffer: PBS with 0.05% proclin300, 50% glycerol, pH7.3.
Concentration:	lot specific
Purification:	Affinity purification
Conjugation:	Unconjugated
Storage:	Store at -20°C. Avoid freeze / thaw cycles.
Stability:	Stable for 12 months from date of receipt.
Predicted Protein Size:	27kDa
Gene Name:	family with sequence similarity 64 member A
Database Link:	<a href="#">Entrez Gene 54478 Human</a> <a href="#">Q9BSJ6</a>
Background:	Predicted to be involved in cell division. Located in nucleolus and nucleoplasm.
Synonyms:	FLJ10156; FLJ10491; RCS1

[View online »](#)

## Product images:



Western blot analysis of various lysates