

Product datasheet for **TA389617**

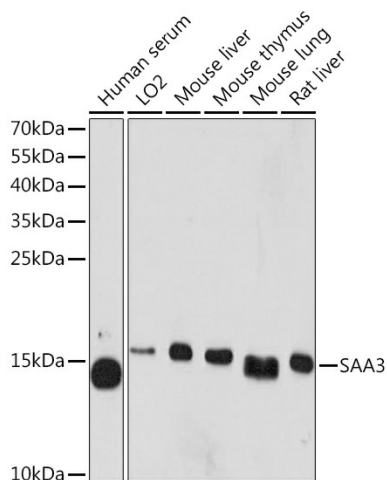
Saa3 Rabbit Polyclonal Antibody

Product data:

Product Type:	Primary Antibodies
Applications:	ELISA, WB
Recommended Dilution:	WB, 1:500 - 1:2000 ELISA, Recommended starting concentration is 1 µg/mL. Please optimize the concentration based on your specific assay requirements.
Reactivity:	Human, Mouse, Rat
Host:	Rabbit
Isotype:	IgG
Clonality:	Polyclonal
Formulation:	Buffer: PBS with 0.02% sodium azide, 50% glycerol, pH 7.3.
Concentration:	lot specific
Purification:	Affinity purification
Conjugation:	Unconjugated
Storage:	Store at -20°C. Avoid freeze / thaw cycles.
Stability:	Stable for 12 months from date of receipt.
Predicted Protein Size:	13kDa
Background:	Enables Toll-like receptor 4 binding activity and chemoattractant activity. Acts upstream of or within several processes, including I-kappaB phosphorylation; cellular response to interleukin-1; and response to stilbenoid. Located in extracellular space. Is expressed in cerebellum; ileum; liver; reproductive system; and thymus. Orthologous to several human genes including SAA2 (serum amyloid A2).



[View online »](#)

Product images:


Western blot analysis of various lysates using SAA3 Rabbit pAb (TA389617) at 1:1000 dilution. Secondary antibody: HRP-conjugated Goat anti-Rabbit IgG (H+L) (AS014) at 1:10000 dilution. Lysates/proteins: 25µg per lane. Blocking buffer: 3% nonfat dry milk in TBST. Detection: ECL Basic Kit (RM00020). Exposure time: 5min.