

## Product datasheet for **TA388894**

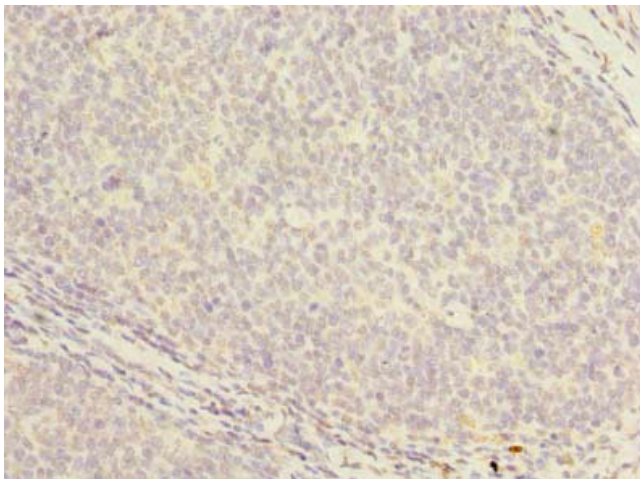
### PCOLCE2 Rabbit Polyclonal Antibody

#### Product data:

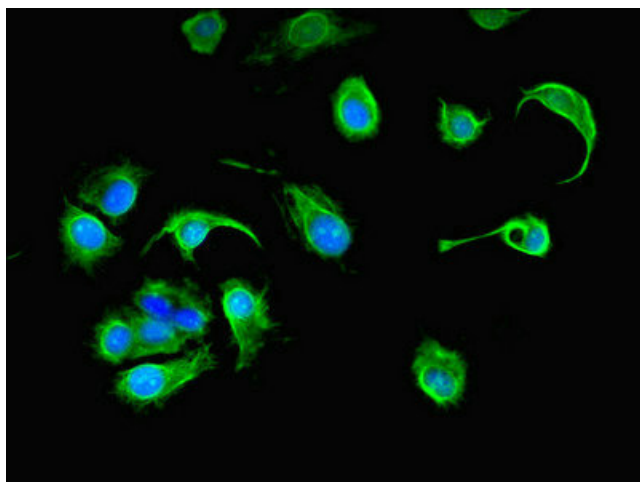
Product Type:	Primary Antibodies
Applications:	IF, IHC, WB
Recommended Dilution:	Recommended dilution: WB:1:500-1:2000, IHC:1:20-1:200, IF:1:50-1:200
Reactivity:	Human
Host:	Rabbit
Isotype:	IgG
Clonality:	Polyclonal
Immunogen:	Recombinant Human Procollagen C-endopeptidase enhancer 2 protein (24-415AA)
Formulation:	Preservative: 0.03% Proclin 300 Constituents: 50% Glycerol, 0.01M PBS, PH 7.4
Concentration:	lot specific
Purification:	>95%, Protein G purified
Conjugation:	Unconjugated
Storage:	Upon receipt, store at -20°C or -80°C. Avoid repeated freeze.
Stability:	1 year from dispatch.
Database Link:	<a href="#">Q9UKZ9</a>
Background:	Binds to the C-terminal propeptide of types I and II procollagens and may enhance the cleavage of that propeptide by BMP1.



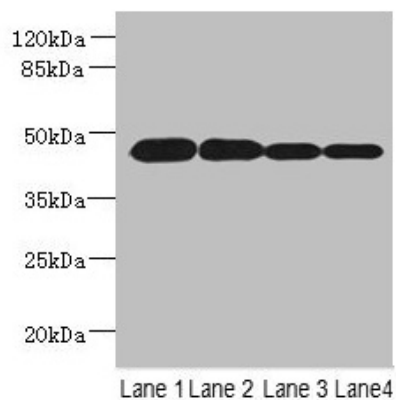
[View online »](#)

**Product images:**

Immunohistochemistry of paraffin-embedded human tonsil tissue using TA388894 at dilution of 1:100



Immunofluorescent analysis of MCF-7 cells using TA388894 at dilution of 1:100 and Alexa Fluor 488-conjugated AffiniPure Goat Anti-Rabbit IgG(H+L)

**Western blot**

All lanes: PCOLCE2 antibody at 8 $\mu$ g/ml

Lane 1: MCF-7 whole cell lysate

Lane 2: A549 whole cell lysate

Lane 3: HCT116 whole cell lysate

Lane 4: Human high value serum

**Secondary**

Goat polyclonal to rabbit IgG at 1/10000 dilution

Predicted band size: 46 kDa

Observed band size: 46 kDa