

Product datasheet for **TA388890M**

Pectate lyase 1 Antibody Rabbit Polyclonal Antibody

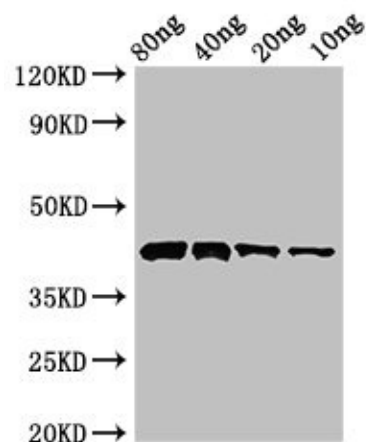
Product data:

Product Type:	Primary Antibodies
Applications:	WB
Recommended Dilution:	Recommended dilution: WB:1:500-1:5000
Reactivity:	Hesperocyparis arizonica
Host:	Rabbit
Isotype:	IgG
Clonality:	Polyclonal
Immunogen:	Recombinant Hesperocyparis arizonica Pectate lyase 1 protein (22-367AA)
Formulation:	Preservative: 0.03% Proclin 300 Constituents: 50% Glycerol, 0.01M PBS, pH 7.4
Concentration:	lot specific
Purification:	>95%, Protein G purified
Conjugation:	Unconjugated
Storage:	Upon receipt, store at -20°C or -80°C. Avoid repeated freeze.
Stability:	1 year from dispatch.
Database Link:	Q9SCG9
Background:	Has pectate lyase activity.



[View online »](#)

Product images:



Western Blot

Positive WB detected in Recombinant protein

All lanes: Pectate lyase 1 antibody at 3 μ g/ml

Secondary

Goat polyclonal to rabbit IgG at 1/50000 dilution

Predicted band size: 43 kDa

Observed band size: 43 kDa