

## Product datasheet for **TA388888**

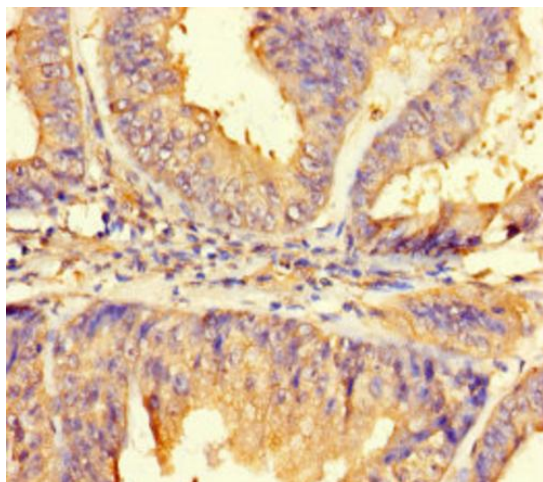
### IMPACT Rabbit Polyclonal Antibody

#### Product data:

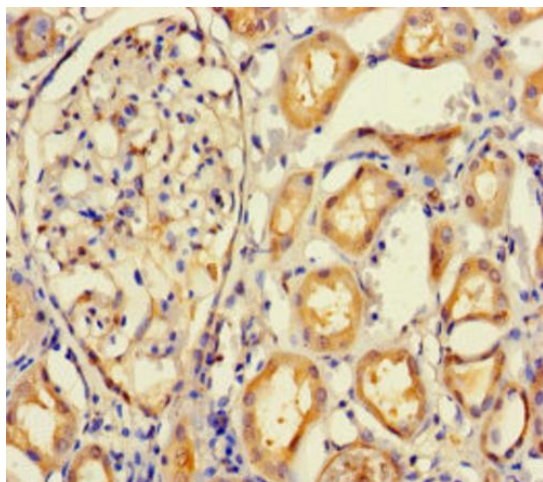
Product Type:	Primary Antibodies
Applications:	IHC, WB
Recommended Dilution:	Recommended dilution: WB:1:1000-1:5000, IHC:1:20-1:200
Reactivity:	Human
Host:	Rabbit
Isotype:	IgG
Clonality:	Polyclonal
Immunogen:	Recombinant Human Protein IMPACT protein (41-320AA)
Formulation:	Preservative: 0.03% Proclin 300 Constituents: 50% Glycerol, 0.01M PBS, PH 7.4
Concentration:	lot specific
Purification:	>95%, Protein G purified
Conjugation:	Unconjugated
Storage:	Upon receipt, store at -20°C or -80°C. Avoid repeated freeze.
Stability:	1 year from dispatch.
Database Link:	<a href="#">Q9P2X3</a>
Background:	Translational regulator that ensures constant high levels of translation under amino acid starvation. Acts by interacting with GCN1/GCN1L1, thereby preventing activation of GCN2 protein kinases (EIF2AK1 to 4) and subsequent down-regulation of protein synthesis. May be required to regulate translation in specific neuronal cells under amino acid starvation conditions by preventing GCN2 activation and therefore ATF4 synthesis. Through its action on GCN2, may also facilitate neuritogenesis.

[View online »](#)

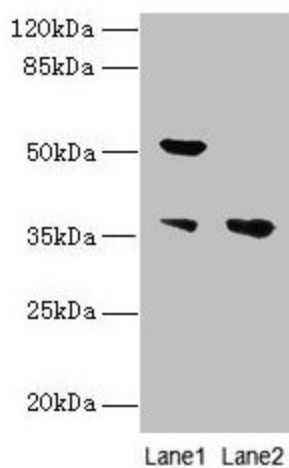
## Product images:



Immunohistochemistry of paraffin-embedded human endometrial cancer using TA388888 at dilution of 1:100



Immunohistochemistry of paraffin-embedded human kidney tissue using TA388888 at dilution of 1:100



Western blot

All lanes: IMPACT antibody at 10 $\mu$ g/ml

Lane 1: Hela whole cell lysate

Lane 2: HL60 whole cell lysate

Secondary

Goat polyclonal to rabbit IgG at 1/10000 dilution

Predicted band size: 37, 23 kDa

Observed band size: 37, 52 kDa