

Product datasheet for **TA388887M**

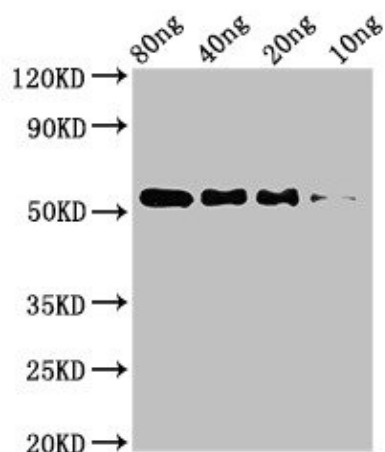
STARD9 Rabbit Polyclonal Antibody

Product data:

Product Type:	Primary Antibodies
Applications:	IHC, WB
Recommended Dilution:	Recommended dilution: WB:1:500-1:5000, IHC:1:20-1:200
Reactivity:	Human
Host:	Rabbit
Isotype:	IgG
Clonality:	Polyclonal
Immunogen:	Recombinant Human StAR-related lipid transfer protein 9 protein (1960-2180AA)
Formulation:	Preservative: 0.03% Proclin 300 Constituents: 50% Glycerol, 0.01M PBS, pH 7.4
Concentration:	lot specific
Purification:	>95%, Protein G purified
Conjugation:	Unconjugated
Storage:	Upon receipt, store at -20°C or -80°C. Avoid repeated freeze.
Stability:	1 year from dispatch.
Database Link:	Q9P2P6
Background:	Microtubule-dependent motor protein required for spindle pole assembly during mitosis. Required to stabilize the pericentriolar material (PCM).



[View online »](#)

Product images:

Western Blot

Positive WB detected in Recombinant protein

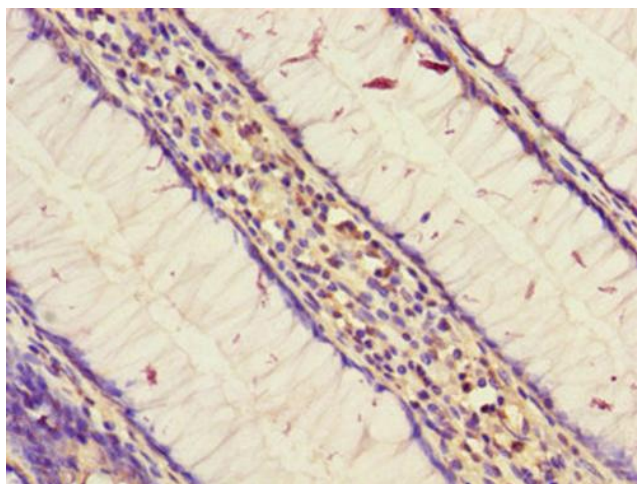
All lanes: STARD9 antibody at 3.2 μ g/ml

Secondary

Goat polyclonal to rabbit IgG at 1/50000 dilution

predicted band size: 55 kDa

observed band size: 55 kDa



Immunohistochemistry of paraffin-embedded human colon cancer using [TA388887] at dilution of 1: 100