

Product datasheet for **TA388884**

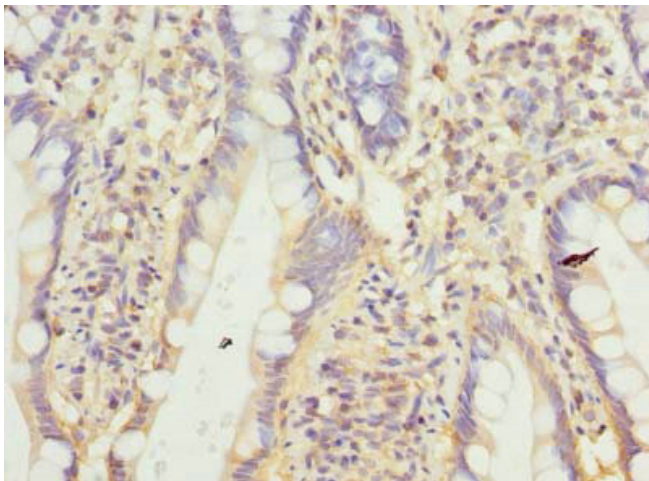
CNIH4 Rabbit Polyclonal Antibody

Product data:

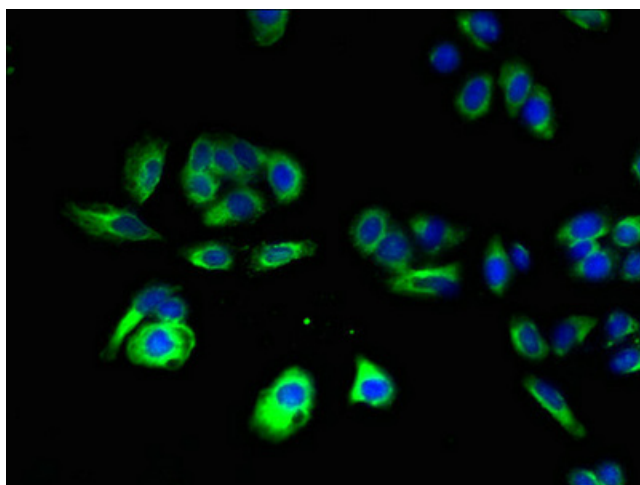
Product Type:	Primary Antibodies
Applications:	IF, IHC, WB
Recommended Dilution:	Recommended dilution: WB:1:500-1:2000, IHC:1:20-1:200, IF:1:50-1:200
Reactivity:	Human
Host:	Rabbit
Isotype:	IgG
Clonality:	Polyclonal
Immunogen:	Recombinant Human Protein cornichon homolog 4 protein (78-117AA)
Formulation:	Preservative: 0.03% Proclin 300 Constituents: 50% Glycerol, 0.01M PBS, PH 7.4
Concentration:	lot specific
Purification:	Antigen Affinity Purified
Conjugation:	Unconjugated
Storage:	Upon receipt, store at -20°C or -80°C. Avoid repeated freeze.
Stability:	1 year from dispatch.
Database Link:	Q9P003
Background:	Involved in G protein-coupled receptors (GPCRs) trafficking from the endoplasmic reticulum to the cell surface; it promotes the exit of GPCRs from the early secretory pathway, likely through interaction with the COPII machinery (PubMed:24405750).



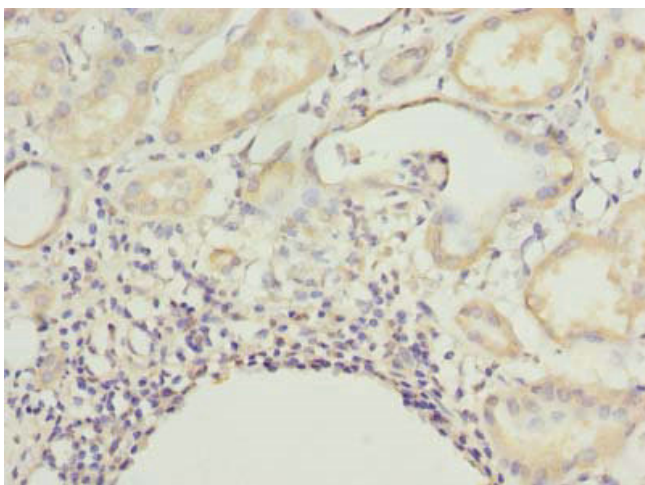
[View online »](#)

Product images:

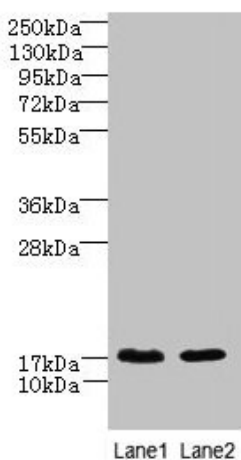
Immunohistochemistry of paraffin-embedded human small intestine tissue using TA388884 at dilution of 1:100



Immunofluorescent analysis of HepG2 cells using TA388884 at dilution of 1:100 and Alexa Fluor 488-conjugated AffiniPure Goat Anti-Rabbit IgG(H+L)



Immunohistochemistry of paraffin-embedded human kidney tissue using TA388884 at dilution of 1:100



Western blot
 All lanes: CNIH4 antibody at 0.3µg/ml
 Lane 1: A431 whole cell lysate
 Lane 2: U251 whole cell lysate
 Secondary
 Goat polyclonal to rabbit IgG at 1/10000 dilution
 Predicted band size: 17, 11 kDa
 Observed band size: 17 kDa