

Product datasheet for **TA388878M**

IFT46 Rabbit Polyclonal Antibody

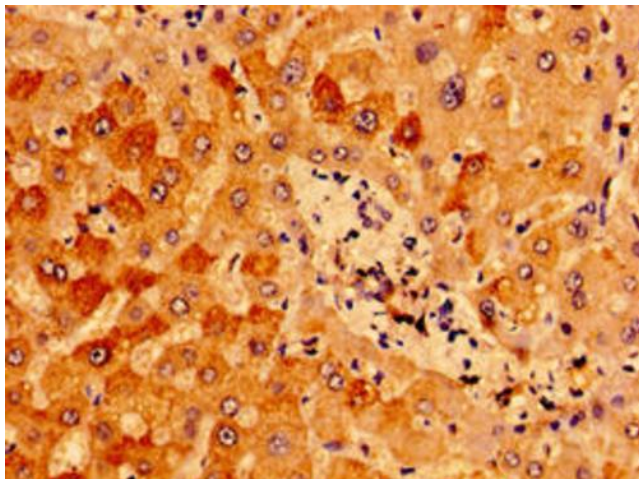
Product data:

Product Type:	Primary Antibodies
Applications:	IHC, WB
Recommended Dilution:	Recommended dilution: WB:1:1000-1:5000, IHC:1:20-1:200
Reactivity:	Mouse, Human
Host:	Rabbit
Isotype:	IgG
Clonality:	Polyclonal
Immunogen:	Recombinant Human Intraflagellar transport protein 46 homolog protein (1-304AA)
Formulation:	Preservative: 0.03% Proclin 300 Constituents: 50% Glycerol, 0.01M PBS, PH 7.4
Concentration:	lot specific
Purification:	>95%, Protein G purified
Conjugation:	Unconjugated
Storage:	Upon receipt, store at -20°C or -80°C. Avoid repeated freeze.
Stability:	1 year from dispatch.
Database Link:	Q9NQC8
Background:	Forms part of a complex involved in intraflagellar transport (IFT), the bi-directional movement of particles required for the assembly, maintenance and functioning of primary cilia. May play a role in chondrocyte maturation and skeletogenesis (By similarity).

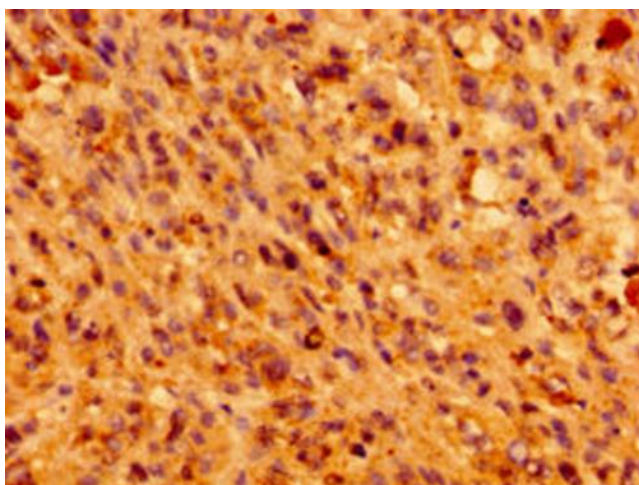


[View online »](#)

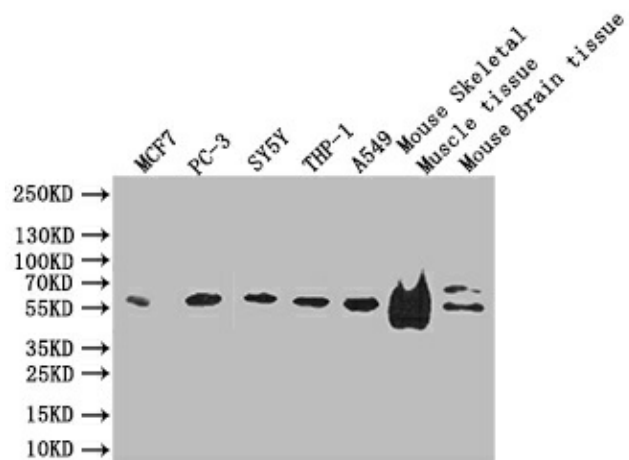
Product images:



Immunohistochemistry of paraffin-embedded human liver tissue using [TA388878] at dilution of 1:100



Immunohistochemistry of paraffin-embedded human melanoma using [TA388878] at dilution of 1:100



Western blot

All lanes: IFT46 antibody at 8 µg/ml + Mouse skeletal muscle tissue

Secondary

Goat polyclonal to rabbit IgG at 1/10000 dilution

Predicted band size: 35, 41 kDa

Observed band size: 35 kDa