

Product datasheet for **TA388878**

IFT46 Rabbit Polyclonal Antibody

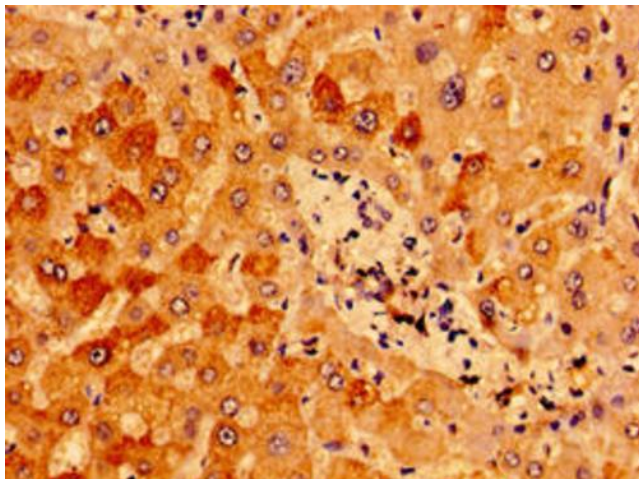
Product data:

| | |
|-----------------------|---|
| Product Type: | Primary Antibodies |
| Applications: | IHC, WB |
| Recommended Dilution: | Recommended dilution: WB:1:1000-1:5000, IHC:1:20-1:200 |
| Reactivity: | Mouse, Human |
| Host: | Rabbit |
| Isotype: | IgG |
| Clonality: | Polyclonal |
| Immunogen: | Recombinant Human Intraflagellar transport protein 46 homolog protein (1-304AA) |
| Formulation: | Preservative: 0.03% Proclin 300 Constituents: 50% Glycerol, 0.01M PBS, PH 7.4 |
| Concentration: | lot specific |
| Purification: | >95%, Protein G purified |
| Conjugation: | Unconjugated |
| Storage: | Upon receipt, store at -20°C or -80°C. Avoid repeated freeze. |
| Stability: | 1 year from dispatch. |
| Database Link: | Q9NQC8 |
| Background: | Forms part of a complex involved in intraflagellar transport (IFT), the bi-directional movement of particles required for the assembly, maintenance and functioning of primary cilia. May play a role in chondrocyte maturation and skeletogenesis (By similarity). |

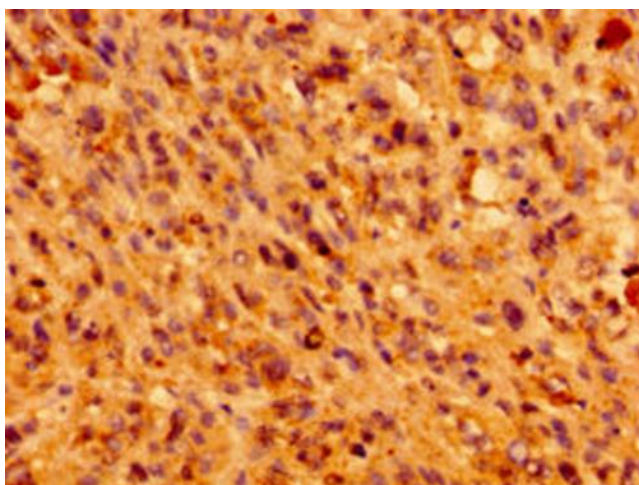


[View online »](#)

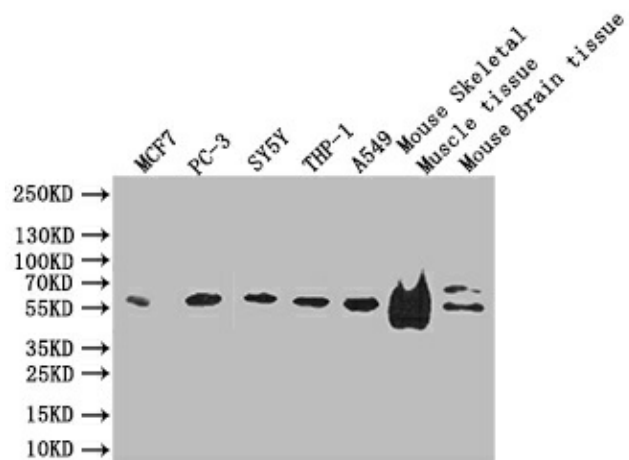
Product images:



Immunohistochemistry of paraffin-embedded human liver tissue using TA388878 at dilution of 1:100



Immunohistochemistry of paraffin-embedded human melanoma using TA388878 at dilution of 1:100



Western blot

All lanes: IFT46 antibody at 8 µg/ml + Mouse skeletal muscle tissue

Secondary

Goat polyclonal to rabbit IgG at 1/10000 dilution

Predicted band size: 35, 41 kDa

Observed band size: 35 kDa