

Product datasheet for **TA388873**

C3orf14 Rabbit Polyclonal Antibody

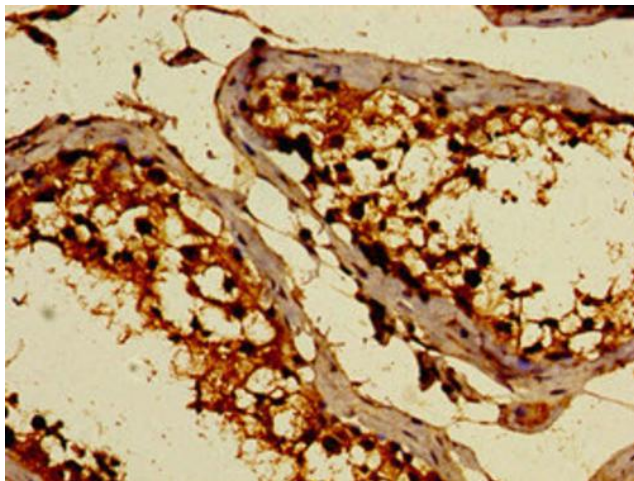
Product data:

| | |
|-----------------------|--|
| Product Type: | Primary Antibodies |
| Applications: | IHC, WB |
| Recommended Dilution: | Recommended dilution: WB:1:500-1:5000, IHC:1:20-1:200 |
| Reactivity: | Mouse, Rat, Human |
| Host: | Rabbit |
| Isotype: | IgG |
| Clonality: | Polyclonal |
| Immunogen: | Recombinant Human Uncharacterized protein C3orf14 protein (9-128AA) |
| Formulation: | Preservative: 0.03% Proclin 300 Constituents: 50% Glycerol, 0.01M PBS, PH 7.4 |
| Concentration: | lot specific |
| Purification: | >95%, Protein G purified |
| Conjugation: | Unconjugated |
| Storage: | Upon receipt, store at -20°C or -80°C. Avoid repeated freeze. |
| Stability: | 1 year from dispatch. |
| Database Link: | Q9HBI5 |

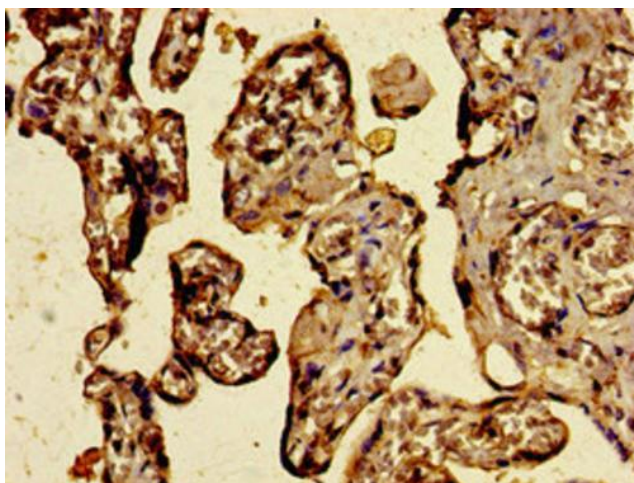


[View online »](#)

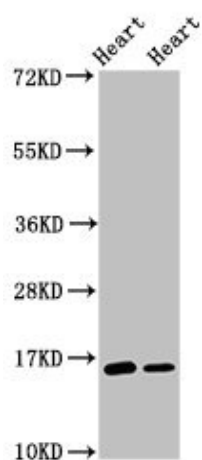
Product images:



Immunohistochemistry of paraffin-embedded human testis tissue using TA388873 at dilution of 1:100



Immunohistochemistry of paraffin-embedded human placenta tissue using TA388873 at dilution of 1:100



Western Blot

Positive WB detected in: Rat heart tissue, Mouse heart tissue

All lanes: C3orf14 antibody at 2.7µg/ml

Secondary

Goat polyclonal to rabbit IgG at 1/50000 dilution

Predicted band size: 16 kDa

Observed band size: 16 kDa