

## Product datasheet for **TA388871M**

### HAUS4 Rabbit Polyclonal Antibody

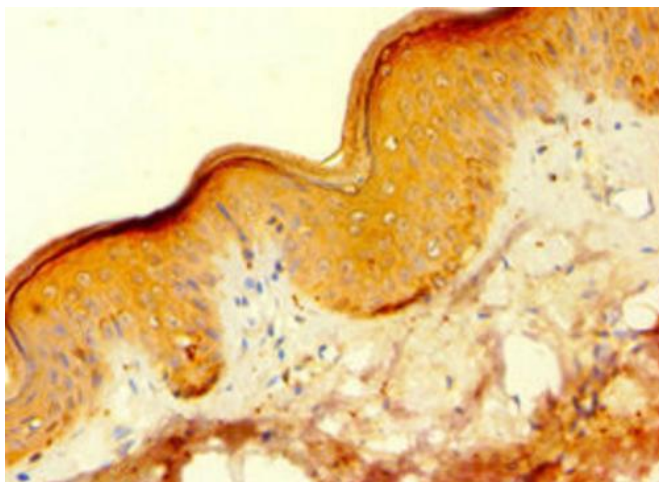
#### Product data:

Product Type:	Primary Antibodies
Applications:	IHC, WB
Recommended Dilution:	Recommended dilution: WB:1:500-1:2000, IHC:1:20-1:200
Reactivity:	Rat, Human
Host:	Rabbit
Isotype:	IgG
Clonality:	Polyclonal
Immunogen:	Recombinant Human HAUS augmin-like complex subunit 4 protein (1-363AA)
Formulation:	PBS with 0.02% sodium azide, 50% glycerol, pH7.3.
Concentration:	lot specific
Purification:	Antigen Affinity Purified
Conjugation:	Unconjugated
Storage:	Upon receipt, store at -20°C or -80°C. Avoid repeated freeze.
Stability:	1 year from dispatch.
Database Link:	<a href="#">Q9H6D7</a>
Background:	Contributes to mitotic spindle assembly, maintenance of centrosome integrity and completion of cytokinesis as part of the HAUS augmin-like complex.

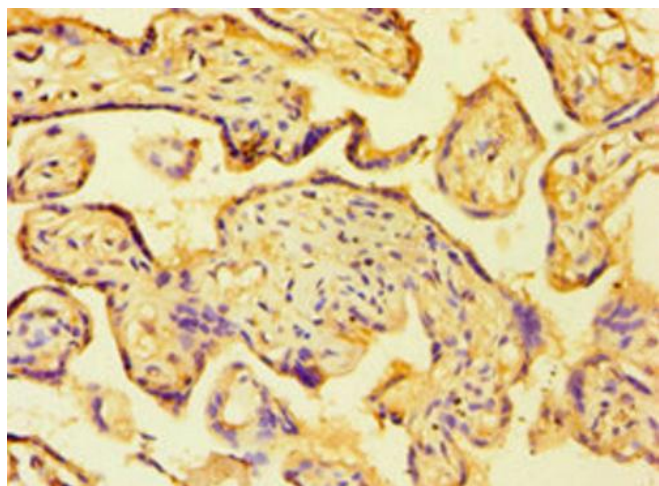


[View online »](#)

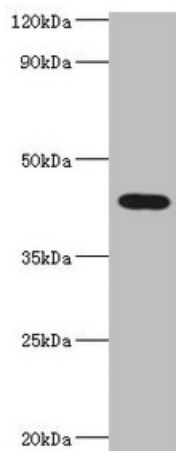
**Product images:**



Immunohistochemistry of paraffin-embedded human skin tissue using [TA388871] at dilution of 1:100



Immunohistochemistry of paraffin-embedded human placenta tissue using [TA388871] at dilution of 1:100



Western blot

All lanes: HAUS augmin-like complex subunit 4 antibody at 6µg/ml + Rat brain tissue

Secondary

Goat polyclonal to rabbit IgG at 1/10000 dilution

Predicted band size: 43, 28, 29, 38 kDa

Observed band size: 43 kDa