

Product datasheet for **TA388867M**

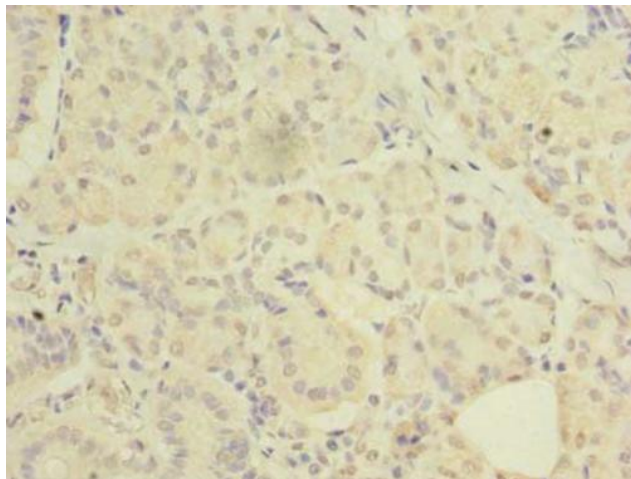
C20orf27 Rabbit Polyclonal Antibody

Product data:

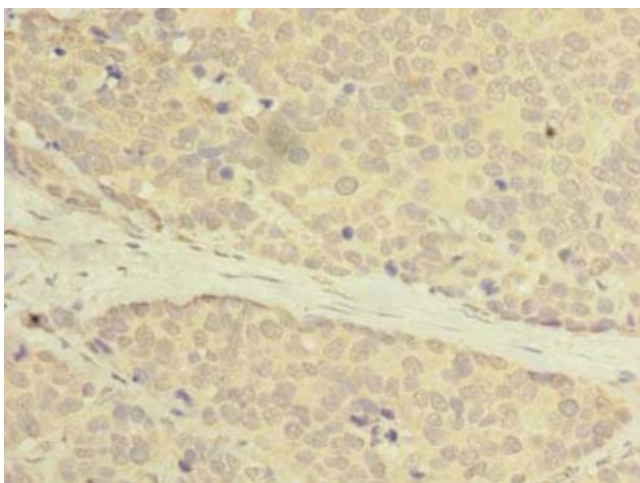
Product Type:	Primary Antibodies
Applications:	IHC, WB
Recommended Dilution:	Recommended dilution: WB:1:500-1:2000, IHC:1:20-1:200
Reactivity:	Human
Host:	Rabbit
Isotype:	IgG
Clonality:	Polyclonal
Immunogen:	Recombinant Human UPF0687 protein C20orf27 protein (3-174AA)
Formulation:	Preservative: 0.03% Proclin 300 Constituents: 50% Glycerol, 0.01M PBS, PH 7.4
Concentration:	lot specific
Purification:	>95%, Protein G purified
Conjugation:	Unconjugated
Storage:	Upon receipt, store at -20°C or -80°C. Avoid repeated freeze.
Stability:	1 year from dispatch.
Database Link:	Q9GZN8

[View online »](#)

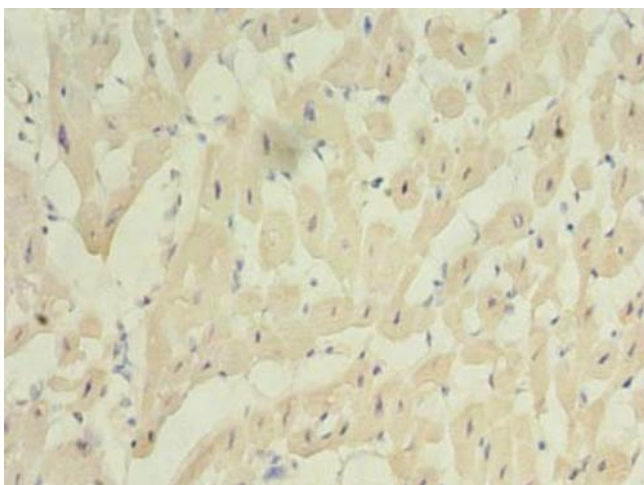
Product images:



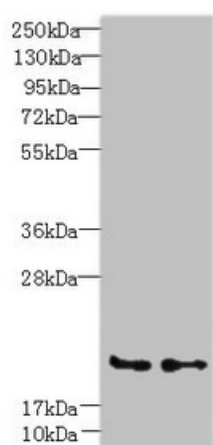
Immunohistochemistry of paraffin-embedded human pancreatic tissue using [TA388867] at dilution of 1: 100



Immunohistochemistry of paraffin-embedded human gastric cancer using [TA388867] at dilution of 1: 100



Immunohistochemistry of paraffin-embedded human heart tissue using [TA388867] at dilution of 1:100



Western blot
All lanes: C20orf27 antibody at 6 μ g/ml
Lane 1: HCT116 whole cell lysate
Lane 2: MDA-MB-231 whole cell lysate
Secondary
Goat polyclonal to rabbit IgG at 1/10000 dilution
Predicted band size: 20, 22 kDa
Observed band size: 20 kDa