

## Product datasheet for **TA388867**

### **C20orf27 Rabbit Polyclonal Antibody**

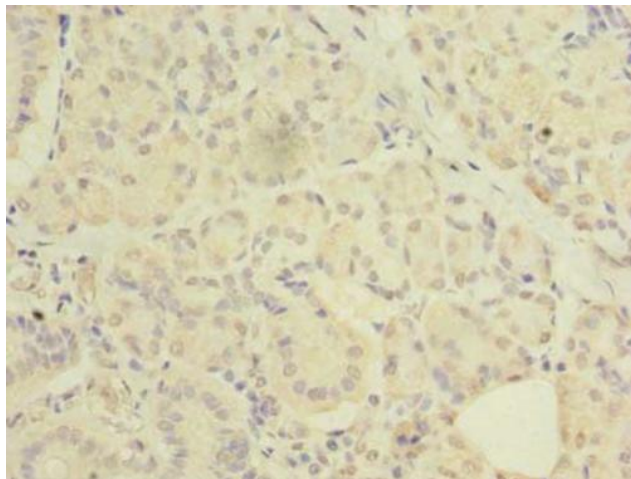
#### **Product data:**

Product Type:	Primary Antibodies
Applications:	IHC, WB
Recommended Dilution:	Recommended dilution: WB:1:500-1:2000, IHC:1:20-1:200
Reactivity:	Human
Host:	Rabbit
Isotype:	IgG
Clonality:	Polyclonal
Immunogen:	Recombinant Human UPF0687 protein C20orf27 protein (3-174AA)
Formulation:	Preservative: 0.03% Proclin 300 Constituents: 50% Glycerol, 0.01M PBS, PH 7.4
Concentration:	lot specific
Purification:	>95%, Protein G purified
Conjugation:	Unconjugated
Storage:	Upon receipt, store at -20°C or -80°C. Avoid repeated freeze.
Stability:	1 year from dispatch.
Database Link:	<a href="#">Q9GZN8</a>

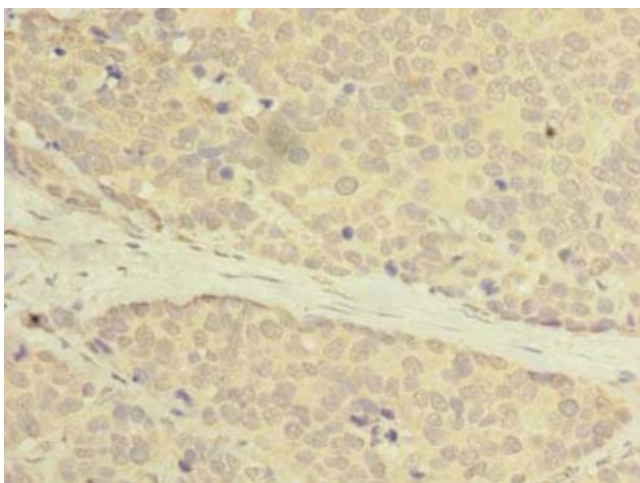


[View online »](#)

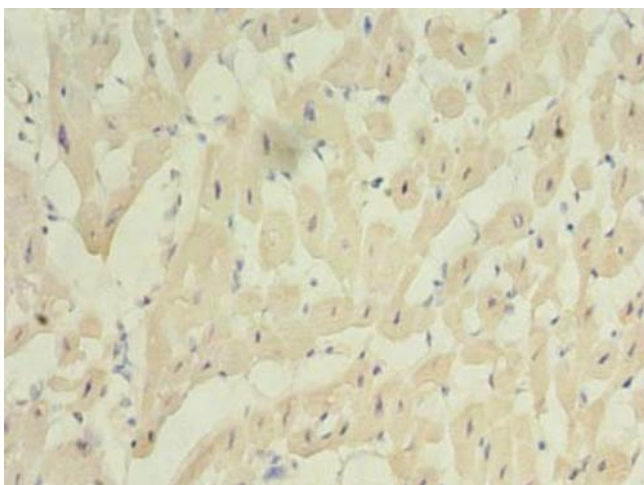
## Product images:



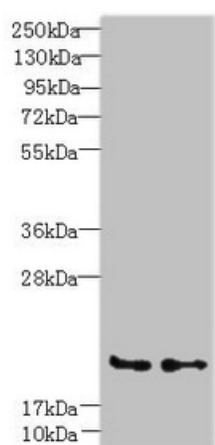
Immunohistochemistry of paraffin-embedded human pancreatic tissue using TA388867 at dilution of 1: 100



Immunohistochemistry of paraffin-embedded human gastric cancer using TA388867 at dilution of 1: 100



Immunohistochemistry of paraffin-embedded human heart tissue using TA388867 at dilution of 1:100



Western blot  
All lanes: C20orf27 antibody at 6 $\mu$ g/ml  
Lane 1: HCT116 whole cell lysate  
Lane 2: MDA-MB-231 whole cell lysate  
Secondary  
Goat polyclonal to rabbit IgG at 1/10000 dilution  
Predicted band size: 20, 22 kDa  
Observed band size: 20 kDa