

## Product datasheet for **TA388864**

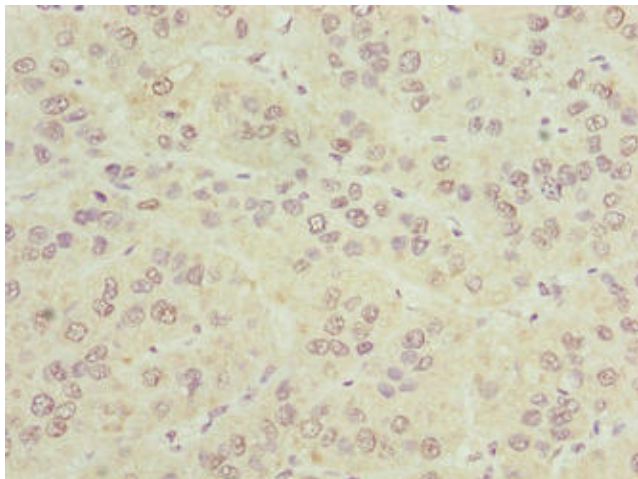
### CIPC Rabbit Polyclonal Antibody

#### Product data:

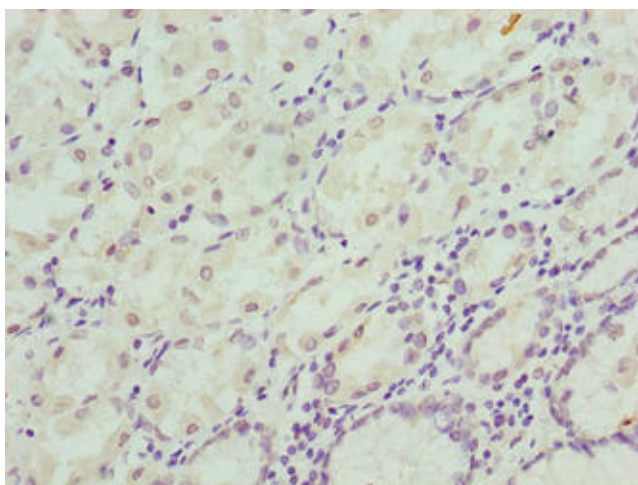
Product Type:	Primary Antibodies
Applications:	IHC, WB
Recommended Dilution:	Recommended dilution: WB:1:1000-1:5000, IHC:1:20-1:200
Reactivity:	Mouse, Human
Host:	Rabbit
Isotype:	IgG
Clonality:	Polyclonal
Immunogen:	Recombinant Human CLOCK-interacting pacemaker protein (1-399AA)
Formulation:	Preservative: 0.03% Proclin 300 Constituents: 50% Glycerol, 0.01M PBS, PH 7.4
Concentration:	lot specific
Purification:	>95%, Protein G purified
Conjugation:	Unconjugated
Storage:	Upon receipt, store at -20°C or -80°C. Avoid repeated freeze.
Stability:	1 year from dispatch.
Database Link:	<a href="#">Q9C0C6</a>
Background:	Transcriptional repressor which acts as a negative-feedback regulator of CLOCK-ARNTL/BMAL1 transcriptional activity in the circadian-clock mechanism. Stimulates ARNTL/BMAL1-dependent phosphorylation of CLOCK.



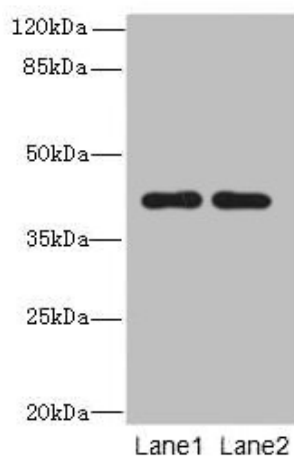
[View online »](#)

**Product images:**

Immunohistochemistry of paraffin-embedded human liver cancer using TA388864 at dilution of 1:100



Immunohistochemistry of paraffin-embedded human stomach tissue using TA388864 at dilution of 1:100



Western blot

All lanes: CIPC antibody at 6 $\mu$ g/ml

Lane 1: A431 whole cell lysate

Lane 2: NIH/3T3 whole cell lysate

Secondary

Goat polyclonal to rabbit IgG at 1/10000 dilution

Predicted band size: 43 kDa

Observed band size: 43 kDa