

Product datasheet for **TA388859**

RTP3 Rabbit Polyclonal Antibody

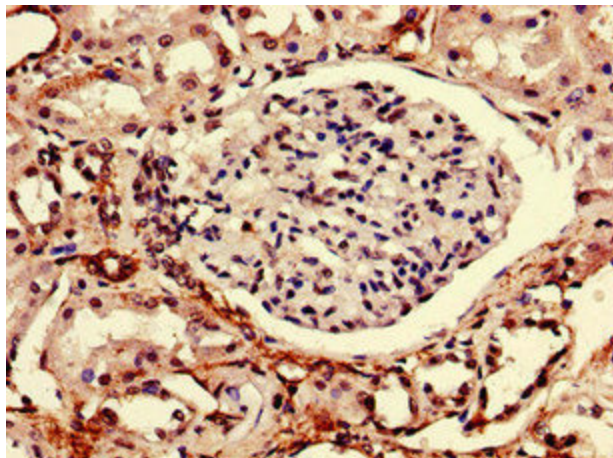
Product data:

Product Type:	Primary Antibodies
Applications:	IHC, IP, WB
Recommended Dilution:	Recommended dilution: WB:1:2000-1:8000, IHC:1:20-1:200, IP:1:200-1:2000
Reactivity:	Mouse, Human
Host:	Rabbit
Isotype:	IgG
Clonality:	Polyclonal
Immunogen:	Recombinant Human Receptor-transporting protein 3 protein (1-211AA)
Formulation:	Preservative: 0.03% Proclin 300 Constituents: 50% Glycerol, 0.01M PBS, PH 7.4
Concentration:	lot specific
Purification:	>95%, Protein G purified
Conjugation:	Unconjugated
Storage:	Upon receipt, store at -20°C or -80°C. Avoid repeated freeze.
Stability:	1 year from dispatch.
Database Link:	Q9BQQ7
Background:	cytoplasm, olfactory receptor binding, detection of chemical stimulus involved in sensory perception of bitter taste, protein insertion into membrane, protein targeting to membrane

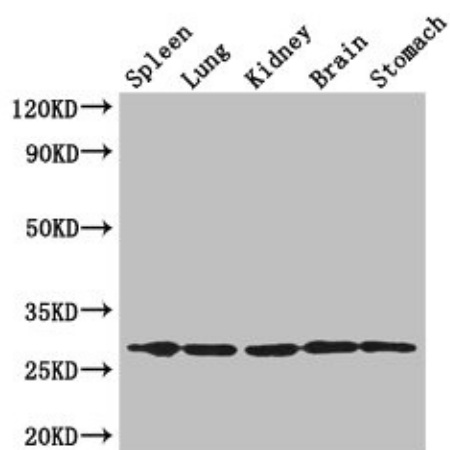


[View online »](#)

Product images:



Immunohistochemistry of paraffin-embedded human kidney tissue using TA388859 at dilution of 1:100



Western Blot

Positive WB detected in: Mouse spleen tissue, ,
Mouse lung tissue, Mouse kidney tissue, Mouse
brain tissue, Mouse stomach tissue

All lanes: RTP3 antibody at 3µg/ml

Secondary

Goat polyclonal to rabbit IgG at 1/50000 dilution

Predicted band size: 28 kDa

Observed band size: 28 kDa