

## Product datasheet for **TA388845**

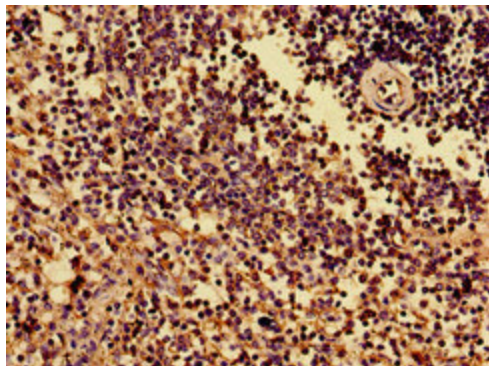
### HLA-B Rabbit Polyclonal Antibody

#### Product data:

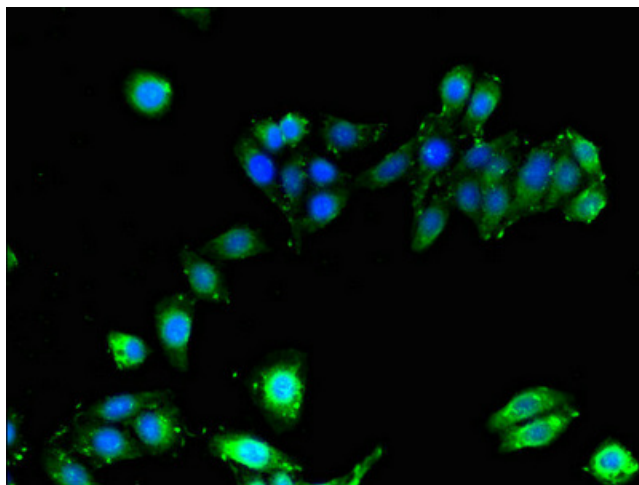
|                       |  |
|-----------------------|--|
| Product Type:         | Primary Antibodies   |
| Applications:         | IF, IHC, WB  |
| Recommended Dilution: | Recommended dilution: WB:1:500-1:5000, IHC:1:20-1:200, IF:1:50-1:200             |
| Reactivity:           | Human  |
| Host:                 | Rabbit   |
| Isotype:              | IgG  |
| Clonality:            | Polyclonal   |
| Immunogen:            | Recombinant Human HLA-B protein (25-308AA)                                       |
| Formulation:          | Preservative: 0.03% Proclin 300<br>Constituents: 50% Glycerol, 0.01M PBS, PH 7.4 |
| Concentration:        | lot specific   |
| Purification:         | >95%, Protein G purified   |
| Conjugation:          | Unconjugated   |
| Storage:              | Upon receipt, store at -20°C or -80°C. Avoid repeated freeze.                    |
| Stability:            | 1 year from dispatch.  |
| Database Link:        | <a href="#">Q96DW9</a>   |
| Background:           | Involved in the presentation of foreign antigens to the immune system            |



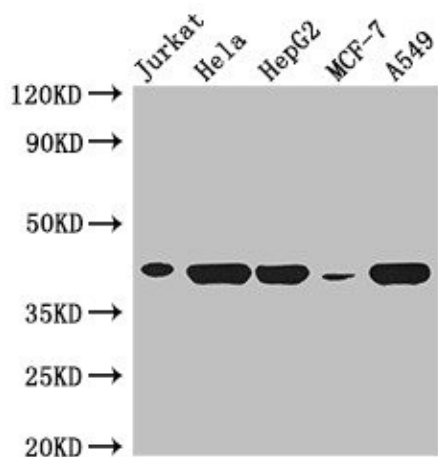
[View online »](#)

**Product images:**

Immunohistochemistry of paraffin-embedded human spleen tissue using TA388845 at dilution of 1:100



Immunofluorescent analysis of HepG2 cells using TA388845 at dilution of 1:100


**Western Blot**

Positive WB detected in: Jurkat whole cell lysate, HeLa whole cell lysate, HepG2 whole cell lysate, MCF-7 whole cell lysate, A549 whole cell lysate

All lanes: HLA-B antibody at 3µg/ml

**Secondary**

Goat polyclonal to rabbit IgG at 1/50000 dilution

Predicted band size: 41 kDa

Observed band size: 41 kDa