

Product datasheet for **TA388844M**

LGALS12 Rabbit Polyclonal Antibody

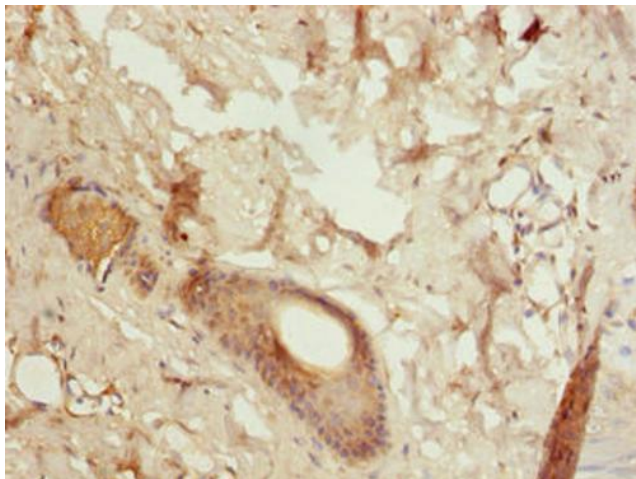
Product data:

Product Type:	Primary Antibodies
Applications:	IHC, WB
Recommended Dilution:	Recommended dilution: WB:1:500-1:5000, IHC:1:20-1:200
Reactivity:	Rat, Human
Host:	Rabbit
Isotype:	IgG
Clonality:	Polyclonal
Immunogen:	Recombinant Human Galectin-12 protein (1-336AA)
Formulation:	Preservative: 0.03% Proclin 300 Constituents: 50% Glycerol, 0.01M PBS, PH 7.4
Concentration:	lot specific
Purification:	>95%, Protein G purified
Conjugation:	Unconjugated
Storage:	Upon receipt, store at -20°C or -80°C. Avoid repeated freeze.
Stability:	1 year from dispatch.
Database Link:	Q96DT0
Background:	Binds lactose. May participate in the apoptosis of adipocytes.

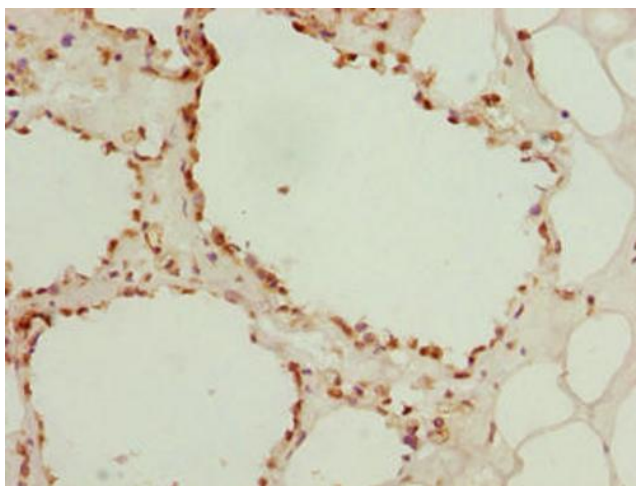


[View online »](#)

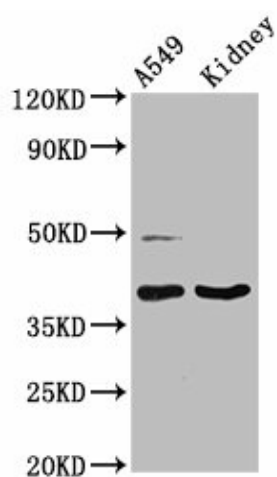
Product images:



Immunohistochemistry of paraffin-embedded human skin tissue using [TA388844] at dilution of 1:100



Immunohistochemistry of paraffin-embedded human breast cancer using [TA388844] at dilution of 1:100



Western Blot

Positive WB detected in: A549 whole cell lysate,
Rat kidney tissue

All lanes: LGALS12 antibody at 3µg/ml

Secondary

Goat polyclonal to rabbit IgG at 1/50000 dilution

Predicted band size: 38, 32, 37, 30, 36 kDa

Observed band size: 38 kDa