

## Product datasheet for **TA388843M**

### **FAM136A Rabbit Polyclonal Antibody**

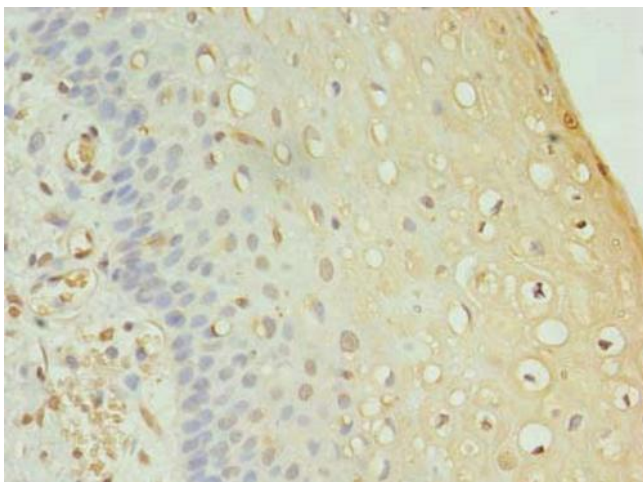
#### **Product data:**

Product Type:	Primary Antibodies
Applications:	IHC, WB
Recommended Dilution:	Recommended dilution: WB:1:500-1:2000, IHC:1:20-1:200
Reactivity:	Human
Host:	Rabbit
Isotype:	IgG
Clonality:	Polyclonal
Immunogen:	Recombinant Human Protein FAM136A protein (2-138AA)
Formulation:	Preservative: 0.03% Proclin 300 Constituents: 50% Glycerol, 0.01M PBS, PH 7.4
Concentration:	lot specific
Purification:	>95%, Protein G purified
Conjugation:	Unconjugated
Storage:	Upon receipt, store at -20°C or -80°C. Avoid repeated freeze.
Stability:	1 year from dispatch.
Database Link:	<a href="#">Q96C01</a>

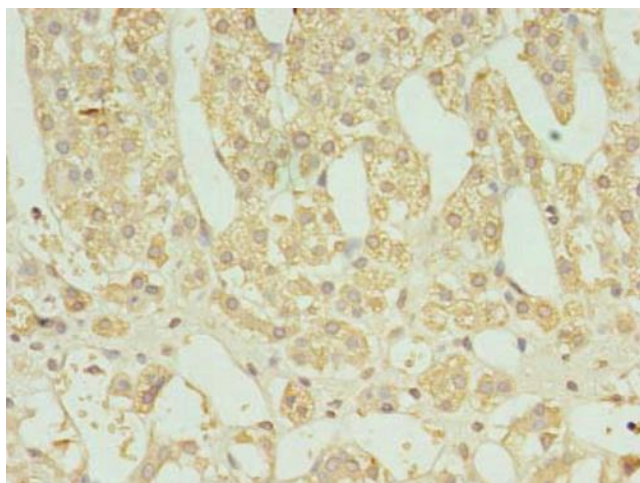


[View online »](#)

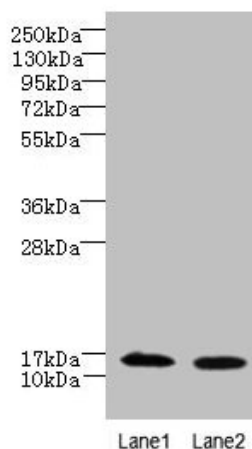
## Product images:



Immunohistochemistry of paraffin-embedded human cervical cancer using [TA388843] at dilution of 1:100



Immunohistochemistry of paraffin-embedded human adrenal gland tissue using [TA388843] at dilution of 1:100



**Western blot**

All lanes: FAM136A antibody at 8 $\mu$ g/ml

Lane 1: Hela whole cell lysate

Lane 2: Caco-2 whole cell lysate

Secondary

Goat polyclonal to rabbit IgG at 1/10000 dilution

Predicted band size: 16 kDa

Observed band size: 16 kDa