

## Product datasheet for **TA388834**

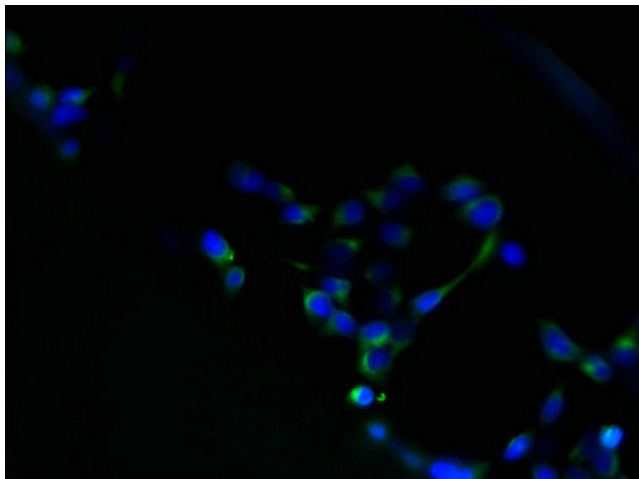
### HM13 Rabbit Polyclonal Antibody

#### Product data:

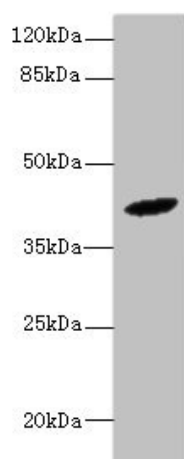
Product Type:	Primary Antibodies
Applications:	IF, WB
Recommended Dilution:	Recommended dilution: WB:1:1000-1:5000, IF:1:50-1:200
Reactivity:	Mouse, Human
Host:	Rabbit
Isotype:	IgG
Clonality:	Polyclonal
Immunogen:	Recombinant Human Minor histocompatibility antigen H13 protein (336-377AA)
Formulation:	Preservative: 0.03% Proclin 300 Constituents: 50% Glycerol, 0.01M PBS, PH 7.4
Concentration:	lot specific
Purification:	>95%, Protein G purified
Conjugation:	Unconjugated
Storage:	Upon receipt, store at -20°C or -80°C. Avoid repeated freeze.
Stability:	1 year from dispatch.
Database Link:	<a href="#">Q8TCT9</a>
Background:	Catalyzes intramembrane proteolysis of some signal peptides after they have been cleaved from a preprotein, resulting in the release of the fragment from the ER membrane into the cytoplasm. Required to generate lymphocyte cell surface (HLA-E) epitopes derived from MHC class I signal peptides (PubMed:11714810). May be necessary for the removal of the signal peptide that remains attached to the hepatitis C virus core protein after the initial proteolytic processing of the polyprotein (PubMed:12145199). Involved in the intramembrane cleavage of the integral membrane protein PSEN1 (PubMed:12077416, PubMed:11714810, PubMed:14741365). Cleaves the integral membrane protein XBP1 isoform 1 in a DERL1/RNF139-dependent manner (PubMed:25239945). May play a role in graft rejection (By similarity).



[View online »](#)

**Product images:**

Immunofluorescent analysis of 293 cells using TA388834 at dilution of 1:100 and Alexa Fluor 488-conjugated AffiniPure Goat Anti-Rabbit IgG(H+L)



Western blot  
All lanes: HM13 antibody at 6 $\mu$ g/ml + Mouse liver tissue  
Secondary  
Goat polyclonal to rabbit IgG at 1/10000 dilution  
Predicted band size: 42, 47, 44, 37 kDa  
Observed band size: 42 kDa