

## Product datasheet for **TA388831**

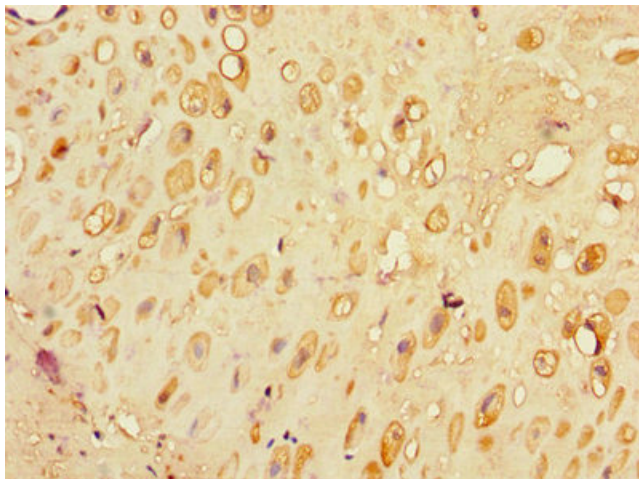
### SLC30A7 Rabbit Polyclonal Antibody

#### Product data:

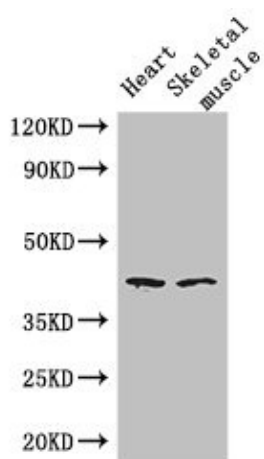
Product Type:	Primary Antibodies
Applications:	IHC, WB
Recommended Dilution:	Recommended dilution: WB:1:1000-1:5000, IHC:1:20-1:200
Reactivity:	Mouse, Human
Host:	Rabbit
Isotype:	IgG
Clonality:	Polyclonal
Immunogen:	Recombinant Human Zinc transporter 7 protein (162-236AA)
Formulation:	Preservative: 0.03% Proclin 300 Constituents: 50% Glycerol, 0.01M PBS, PH 7.4
Concentration:	lot specific
Purification:	>95%, Protein G purified
Conjugation:	Unconjugated
Storage:	Upon receipt, store at -20°C or -80°C. Avoid repeated freeze.
Stability:	1 year from dispatch.
Database Link:	<a href="#">Q8NEW0</a>
Background:	Seems to facilitate zinc transport from the cytoplasm into the Golgi apparatus. Partly regulates cellular zinc homeostasis. Required with ZNT5 for the activation of zinc-requiring enzymes, alkaline phosphatases (ALPs). Transports zinc into the lumens of the Golgi apparatus and the vesicular compartments where ALPs locate, thus, converting apoALPs to holoALPs. Required with ZNT5 and ZNT6 for the activation of TNAP (By similarity).



[View online »](#)

**Product images:**

Immunohistochemistry of paraffin-embedded human placenta tissue using TA388831 at dilution of 1:100



Western Blot  
Positive WB detected in: Mouse heart tissue,  
Mouse skeletal muscle tissue  
All lanes: SLC30A7 antibody at 3µg/ml  
Secondary  
Goat polyclonal to rabbit IgG at 1/50000 dilution  
Predicted band size: 42 kDa  
Observed band size: 42 kDa