

## Product datasheet for **TA388826M**

### CCDC89 Rabbit Polyclonal Antibody

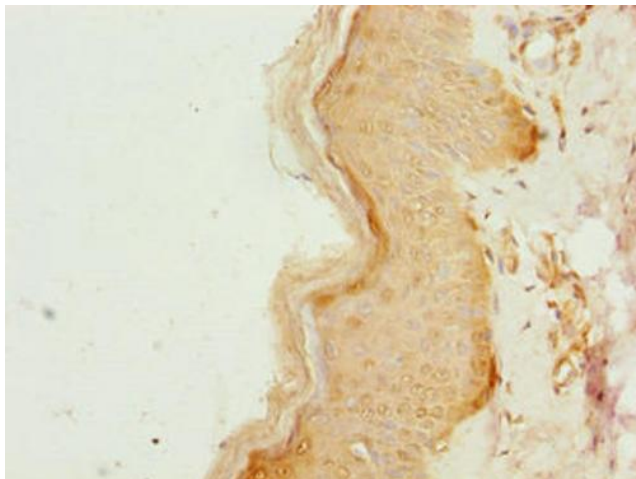
#### Product data:

Product Type:	Primary Antibodies
Applications:	IHC, WB
Recommended Dilution:	Recommended dilution: WB:1:1000-1:5000, IHC:1:20-1:200
Reactivity:	Mouse, Human
Host:	Rabbit
Isotype:	IgG
Clonality:	Polyclonal
Immunogen:	Recombinant Human Coiled-coil domain-containing protein 89 protein (1-200AA)
Formulation:	Preservative: 0.03% Proclin 300 Constituents: 50% Glycerol, 0.01M PBS, PH 7.4
Concentration:	lot specific
Purification:	Antigen Affinity Purified
Conjugation:	Unconjugated
Storage:	Upon receipt, store at -20°C or -80°C. Avoid repeated freeze.
Stability:	1 year from dispatch.
Database Link:	<a href="#">Q8N998</a>

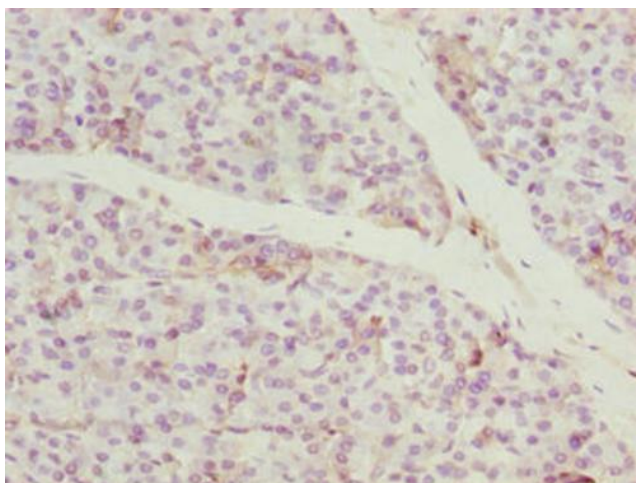


[View online »](#)

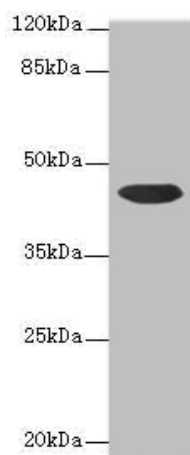
**Product images:**



Immunohistochemistry of paraffin-embedded human skin tissue using [TA388826] at dilution of 1:100



Immunohistochemistry of paraffin-embedded human pancreatic tissue using [TA388826] at dilution of 1:100



Western blot  
 All lanes: CCDC89 antibody at 1.7µg/ml + Mouse kidney tissue  
 Secondary  
 Goat polyclonal to rabbit IgG at 1/10000 dilution  
 Predicted band size: 44 kDa  
 Observed band size: 44 kDa