

## Product datasheet for **TA388826**

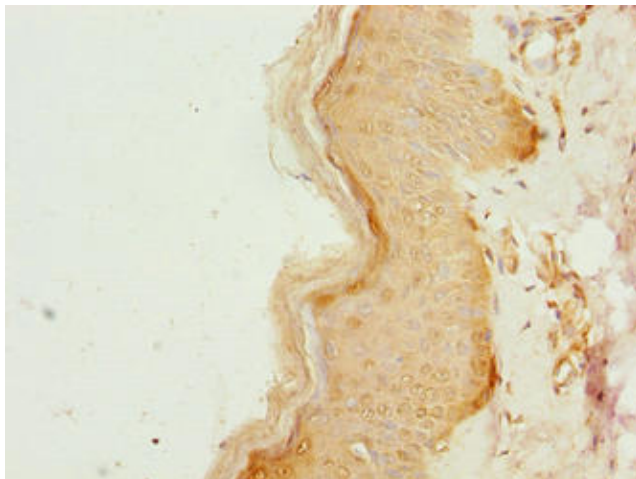
### CCDC89 Rabbit Polyclonal Antibody

#### Product data:

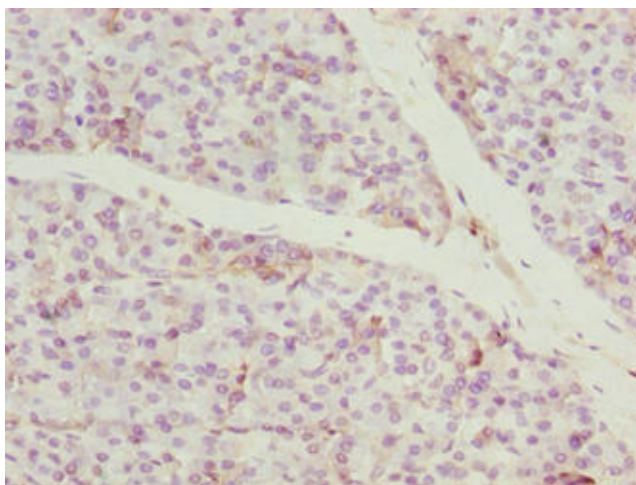
Product Type:	Primary Antibodies
Applications:	IHC, WB
Recommended Dilution:	Recommended dilution: WB:1:1000-1:5000, IHC:1:20-1:200
Reactivity:	Mouse, Human
Host:	Rabbit
Isotype:	IgG
Clonality:	Polyclonal
Immunogen:	Recombinant Human Coiled-coil domain-containing protein 89 protein (1-200AA)
Formulation:	Preservative: 0.03% Proclin 300 Constituents: 50% Glycerol, 0.01M PBS, PH 7.4
Concentration:	lot specific
Purification:	Antigen Affinity Purified
Conjugation:	Unconjugated
Storage:	Upon receipt, store at -20°C or -80°C. Avoid repeated freeze.
Stability:	1 year from dispatch.
Database Link:	<a href="#">Q8N998</a>



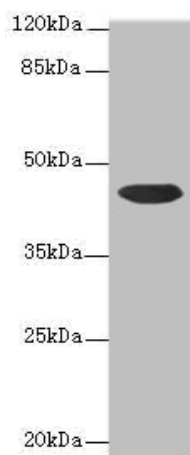
[View online »](#)

**Product images:**

Immunohistochemistry of paraffin-embedded human skin tissue using TA388826 at dilution of 1:100



Immunohistochemistry of paraffin-embedded human pancreatic tissue using TA388826 at dilution of 1:100



Western blot  
All lanes: CCDC89 antibody at 1.7 $\mu$ g/ml + Mouse kidney tissue  
Secondary  
Goat polyclonal to rabbit IgG at 1/10000 dilution  
Predicted band size: 44 kDa  
Observed band size: 44 kDa