

## Product datasheet for **TA388816M**

### CLYBL Rabbit Polyclonal Antibody

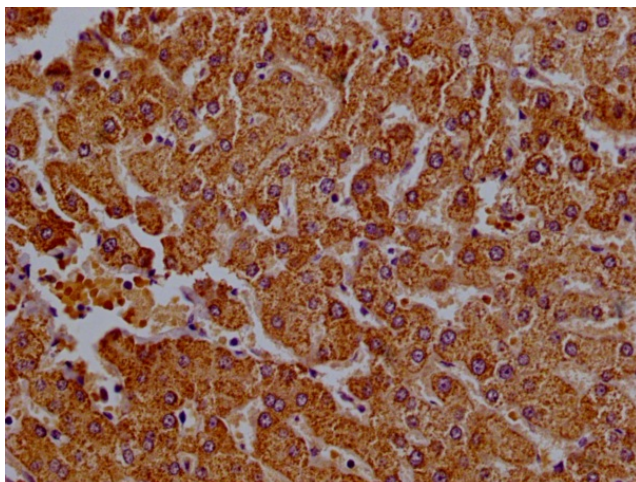
#### Product data:

Product Type:	Primary Antibodies
Applications:	IHC, WB
Recommended Dilution:	Recommended dilution: WB:1:1000-1:5000, IHC:1:20-1:200
Reactivity:	Mouse, Human
Host:	Rabbit
Isotype:	IgG
Clonality:	Polyclonal
Immunogen:	Recombinant Human Citrate lyase subunit beta-like protein, mitochondrial protein (23-340AA)
Formulation:	Preservative: 0.03% Proclin 300 Constituents: 50% Glycerol, 0.01M PBS, PH 7.4
Concentration:	lot specific
Purification:	>95%, Protein G purified
Conjugation:	Unconjugated
Storage:	Upon receipt, store at -20°C or -80°C. Avoid repeated freeze.
Stability:	1 year from dispatch.
Database Link:	<a href="#">Q8N0X4</a>
Background:	Mitochondrial malate and beta-methylmalate synthase, which may be involved in vitamin B12 metabolism (Probable). Acts both as a malate synthase, converting glyoxylate and acetyl-CoA to malate. Also acts as a beta-methylmalate synthase by mediating conversion of glyoxylate and propionyl-CoA to beta-methylmalate (PubMed:24334609).

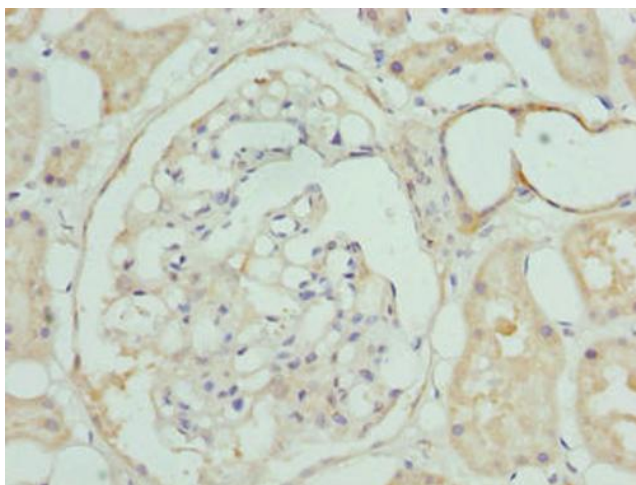


[View online »](#)

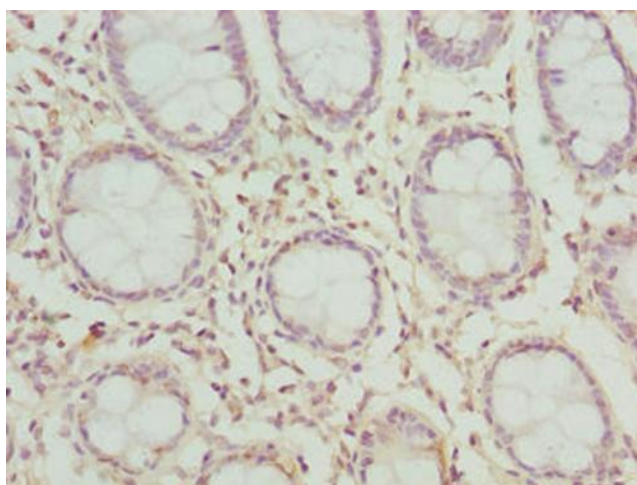
## Product images:



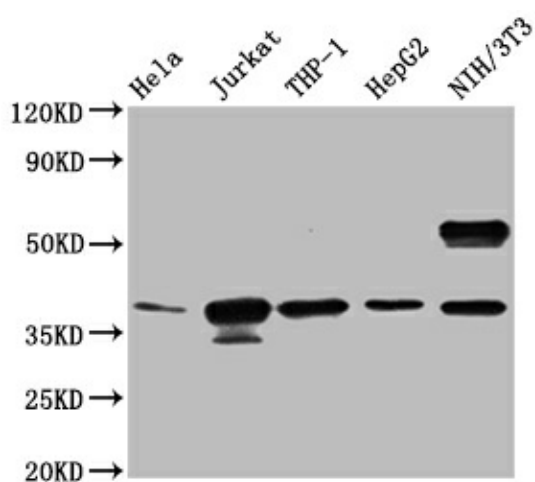
Immunohistochemistry of paraffin-embedded human liver tissue using [TA388816] at dilution of 1:100



Immunohistochemistry of paraffin-embedded human kidney tissue using [TA388816] at dilution of 1:100



Immunohistochemistry of paraffin-embedded human colon tissue using [TA388816] at dilution of 1:100



Western blot  
All lanes: CLYBL antibody at 1 $\mu$ g/ml  
Lane 1: HeLa whole cell lysate  
Lane 2: NIH/3T3 whole cell lysate  
Secondary  
Goat polyclonal to rabbit IgG at 1/10000 dilution  
Predicted band size: 38, 34 kDa  
Observed band size: 38 kDa