

## Product datasheet for **TA388814M**

### SLC38A6 Rabbit Polyclonal Antibody

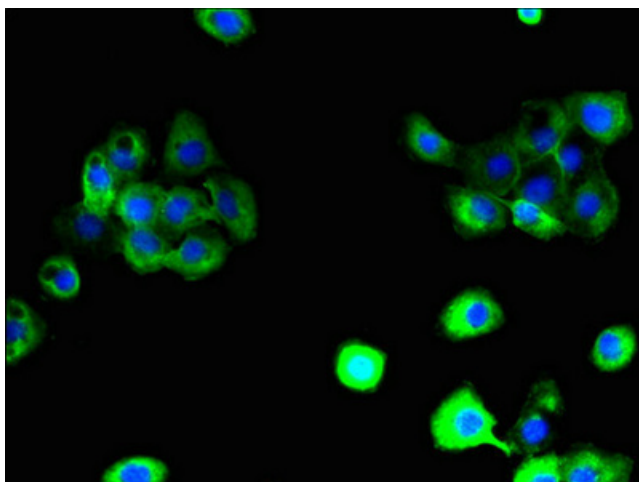
#### Product data:

Product Type:	Primary Antibodies
Applications:	IF, WB
Recommended Dilution:	Recommended dilution: WB:1:1000-1:5000, IF:1:50-1:200
Reactivity:	Mouse, Human
Host:	Rabbit
Isotype:	IgG
Clonality:	Polyclonal
Immunogen:	Recombinant Human Probable sodium-coupled neutral amino acid transporter 6 protein (132-169AA)
Formulation:	Preservative: 0.03% Proclin 300 Constituents: 50% Glycerol, 0.01M PBS, PH 7.4
Concentration:	lot specific
Purification:	>95%, Protein G purified
Conjugation:	Unconjugated
Storage:	Upon receipt, store at -20°C or -80°C. Avoid repeated freeze.
Stability:	1 year from dispatch.
Database Link:	<a href="#">Q8IZM9</a>
Background:	Probable sodium-dependent amino acid/proton antiporter, could be a neuronal transporter for glutamate.

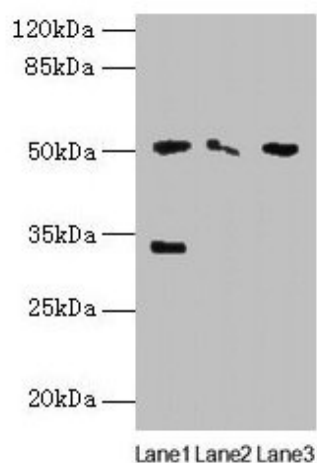


[View online »](#)

## Product images:



Immunofluorescent analysis of A431 cells using [TA388814] at dilution of 1:100 and Alexa Fluor 488-conjugated AffiniPure Goat Anti-Rabbit IgG(H+L)



Western blot  
All lanes: SLC38A6 antibody at 12µg/ml  
Lane 1: Mouse kidney tissue  
Lane 2: Mouse thymus tissue  
Lane 3: U87 whole cell lysate  
Secondary  
Goat polyclonal to rabbit IgG at 1/10000 dilution  
Predicted band size: 51, 58 kDa  
Observed band size: 51, 33 kDa