

## Product datasheet for **TA388812**

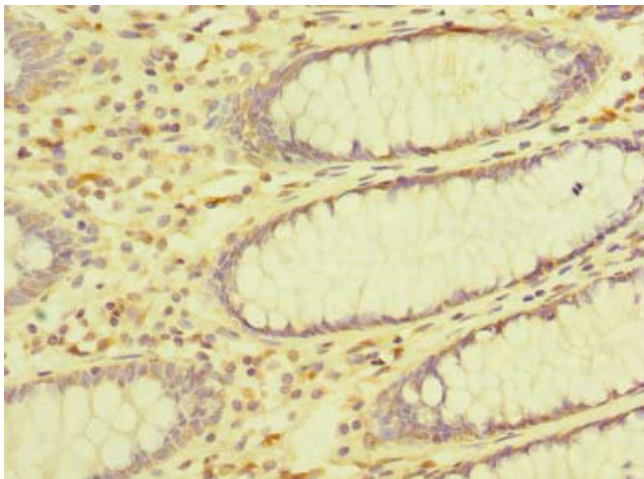
### ZDHHC23 Rabbit Polyclonal Antibody

#### Product data:

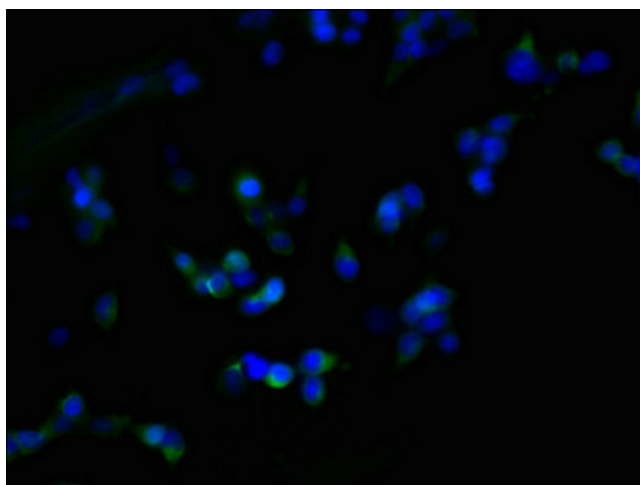
Product Type:	Primary Antibodies
Applications:	IF, IHC, WB
Recommended Dilution:	Recommended dilution: WB:1:500-1:2000, IHC:1:20-1:200, IF:1:50-1:200
Reactivity:	Mouse, Human
Host:	Rabbit
Isotype:	IgG
Clonality:	Polyclonal
Immunogen:	Recombinant Human Palmitoyltransferase ZDHHC23 protein (187-302AA)
Formulation:	Preservative: 0.03% Proclin 300 Constituents: 50% Glycerol, 0.01M PBS, PH 7.4
Concentration:	lot specific
Purification:	>95%, Protein G purified
Conjugation:	Unconjugated
Storage:	Upon receipt, store at -20°C or -80°C. Avoid repeated freeze.
Stability:	1 year from dispatch.
Database Link:	<a href="#">Q8IYP9</a>
Background:	Palmitoyltransferase that mediates palmitoylation of KCNMA1, regulating localization of KCNMA1 to the plasma membrane. May be involved in NOS1 regulation and targeting to the synaptic membrane.



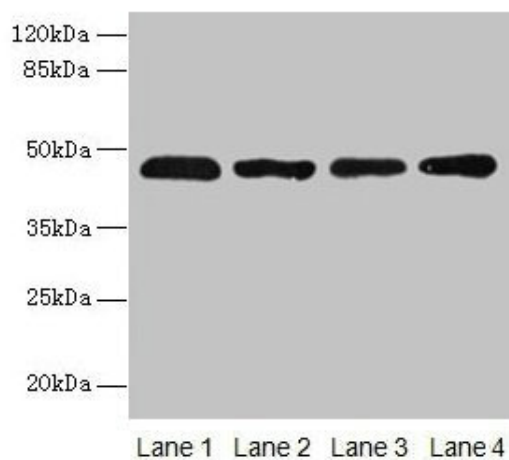
[View online »](#)

**Product images:**

Immunohistochemistry of paraffin-embedded human colon cancer using TA388812 at dilution of 1:100



Immunofluorescent analysis of 293T cells using TA388812 at dilution of 1:100 and Alexa Fluor 488-conjugated AffiniPure Goat Anti-Rabbit IgG(H+L)



## Western blot

All lanes: ZDHHC23 antibody at 8 $\mu$ g/ml

Lane 1: 293T whole cell lysate

Lane 2: Mouse brain tissue

Lane 3: A549 whole cell lysate

Lane 4: Human placenta tissue

Secondary

Goat polyclonal to rabbit IgG at 1/10000 dilution

Predicted band size: 46 kDa

Observed band size: 46 kDa