

Product datasheet for **TA388811M**

SLC15A3 Rabbit Polyclonal Antibody

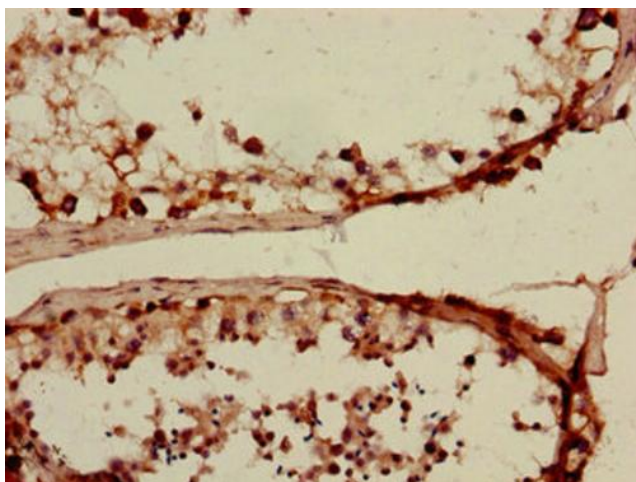
Product data:

Product Type:	Primary Antibodies
Applications:	IHC, WB
Recommended Dilution:	Recommended dilution: WB:1:500-1:5000, IHC:1:20-1:200
Reactivity:	Mouse, Human
Host:	Rabbit
Isotype:	IgG
Clonality:	Polyclonal
Immunogen:	Recombinant Human Solute carrier family 15 member 3 protein (253-309AA)
Formulation:	Preservative: 0.03% Proclin 300 Constituents: 50% Glycerol, 0.01M PBS, PH 7.4
Concentration:	lot specific
Purification:	>95%, Protein G purified
Conjugation:	Unconjugated
Storage:	Upon receipt, store at -20°C or -80°C. Avoid repeated freeze.
Stability:	1 year from dispatch.
Database Link:	Q8IY34
Background:	Proton oligopeptide cotransporter. Transports free histidine and certain di- and tripeptides (By similarity).

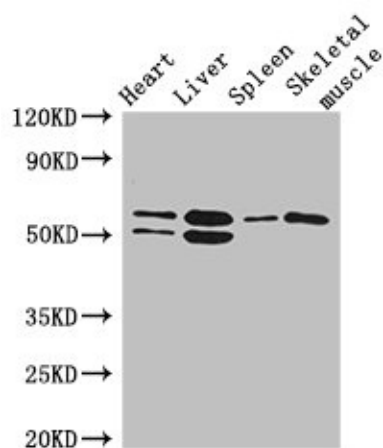


[View online »](#)

Product images:



Immunohistochemistry of paraffin-embedded human testis tissue using [TA388811] at dilution of 1:100



Western Blot

Positive WB detected in: Mouse heart tissue, Mouse liver tissue, Mouse spleen tissue, Mouse skeletal muscle tissue

All lanes: SLC15A3 antibody at 5µg/ml

Secondary

Goat polyclonal to rabbit IgG at 1/50000 dilution

Predicted band size: 64 kDa

Observed band size: 64, 50 kDa